



carbonfarm

**Termes de Référence Achat de Sarcleuses Mandava & Cono, Râteaux et Marqueurs à rouleau pour la mise en œuvre du SRI**

**N : SN- DK-LA-MT0-00458-457-456-455**

**I. Contexte**

La prépondérance de l'agriculture dans l'économie sénégalaise représentant 17% du PIB (1) et 30% de la population active (2).

Le poids de l'industrie rizicole dans l'agriculture sénégalaise avec 38% de la production céréalière (3).

Ensuite il y'a les enjeux de résilience au changement climatique et de sécurité alimentaire (1) Banque Mondiale, WDI, 2024 (2) Banque Mondiale, WDI, 2025 (3) ANSD, 2021

L'agriculture et le riz sont représentés dans la CDN du Sénégal, avec pour objectif de passer à 28,500 ha de riziculture irriguée cultivés en SRI d'ici 2030.

C'est dans cette optique que le consortium ACF -CarbonFarm compte mettre en œuvre la phase pilote du projet Climaterice dans la région de Matam en partenariat avec la SAED.

A cet effet, Action Contre la Faim mission Sénégal à travers son bureau à Matam d'accompagner les producteurs du SRI à travers la mise à dispositions de sarcleuses et marqueurs pour alléger la charge de travail de ces derniers.

**I. Objectifs spécifiques**

Il s'agit concrètement de :

- Acheter 100 sarcleuses MANDAVA (Spécifications techniques attaché)
- Acheter 100 sarcleuses CONO (Spécifications techniques attaché)
- Acheter 20 Râteaux de Marquage (Spécifications techniques attaché)
- Acheter 20 Marqueur à Rouleau (Spécifications techniques attaché)
- Mettre à la disposition des productrices et producteurs 100 sarcleuses MANDAVA, 100 sarcleuses CONO, 20 Râteau de Marquage, et 20 Marqueur à Rouleau

**II. Résultats Attendus**

Les résultats attendus de cette mission se résument comme suit :

- Les 100 sarcleuses MANDAVA sont achetées
- Les 100 sarcleuses CONO sont achetées

EAYS

- Les 20 Râteaux de Marquage sont achetés,
- Les 20 Marqueurs à Rouleau sont achetés
- Les 200 sarcleuses respectivement 100 MANDAVA et 100 CONO, les 20 Râteaux de Marquage et les 20 Marqueurs à Rouleau sont mises à la disposition des producteurs et des productrices.

### INSTRUCTIONS POUR SOUMETTRE UNE OFFRE

Les fournisseurs intéressés sont invités à soumettre leur offre financière pour la fourniture d'engrais conformément **aux spécifications jointes**.

Pour plus d'info appeler au : 77 766 53 72

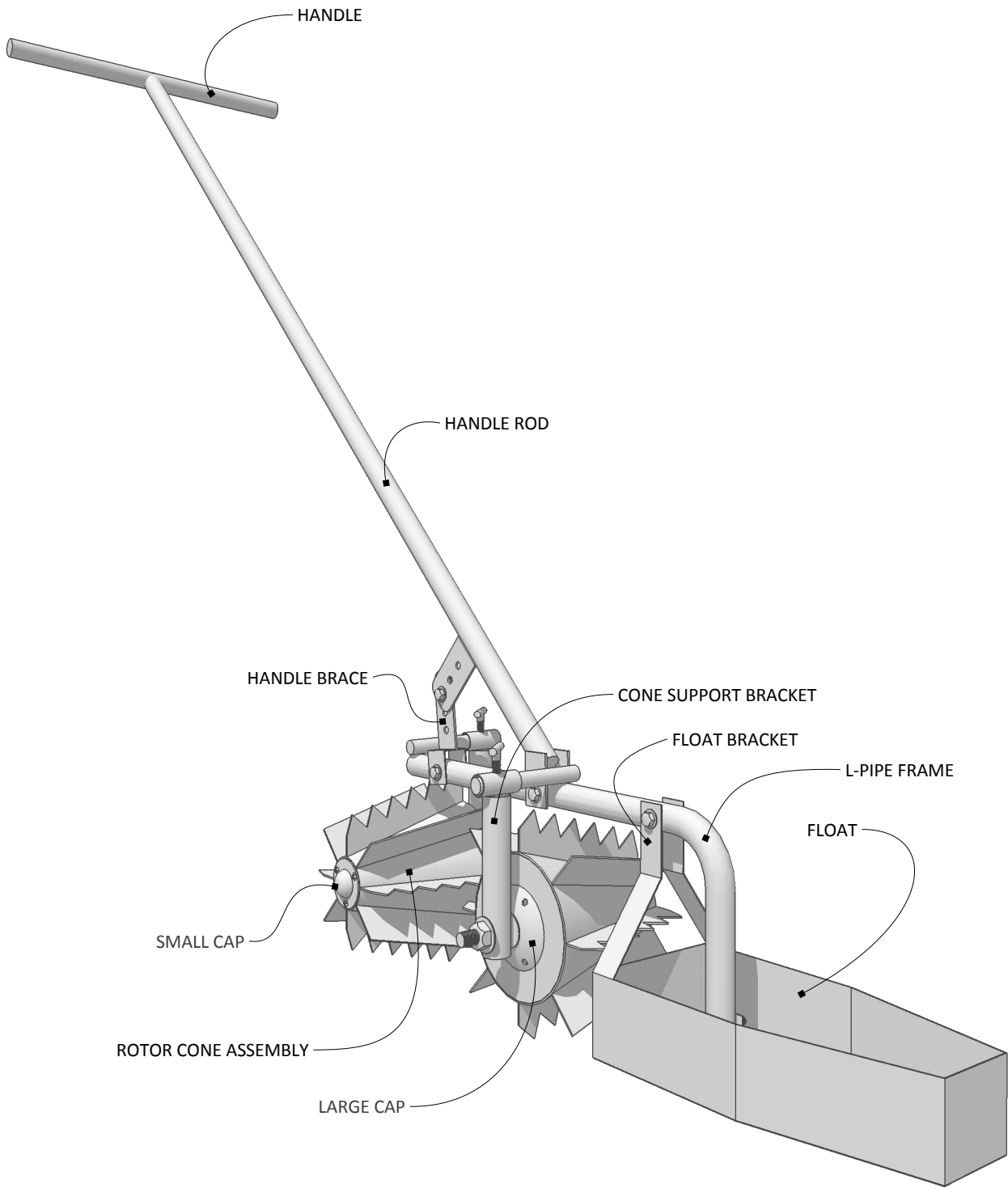
Les offres doivent être transmises par courriel aux adresses suivantes :

- [csougou@sn.acfspain.org](mailto:csougou@sn.acfspain.org)
- [aysonko@sn.acfspain.org](mailto:aysonko@sn.acfspain.org)

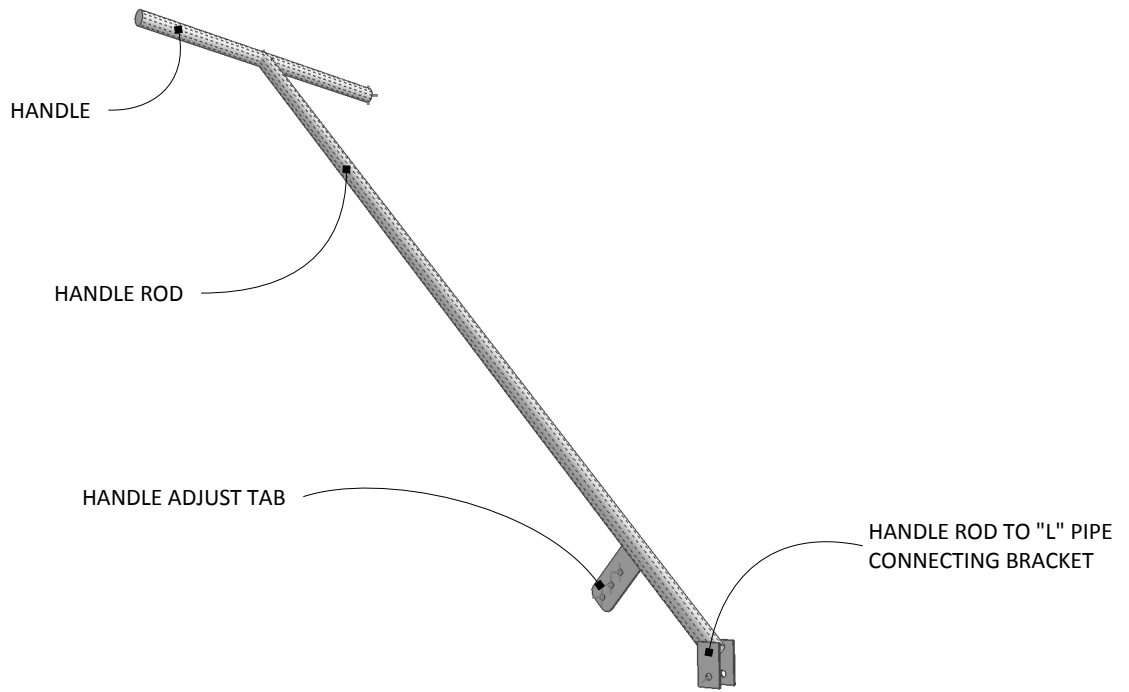
Les fournisseurs sont encouragés à soumettre leurs meilleures offres dans les délais impartis afin de permettre l'évaluation et la sélection du fournisseur retenu.

**La date limite de réception des offres est fixée au mardi 30 juin 2026 à 17h00.**

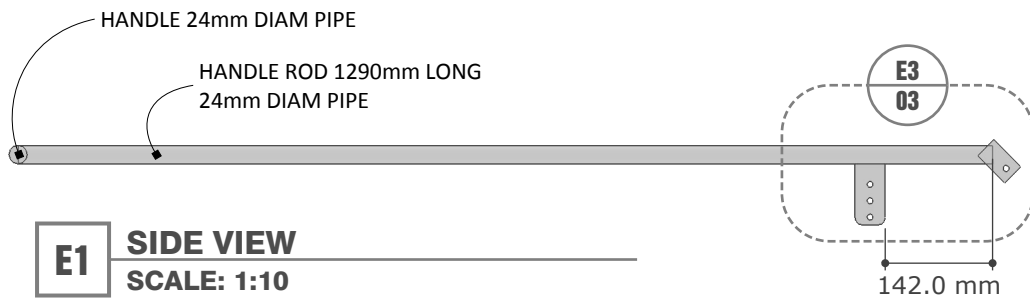




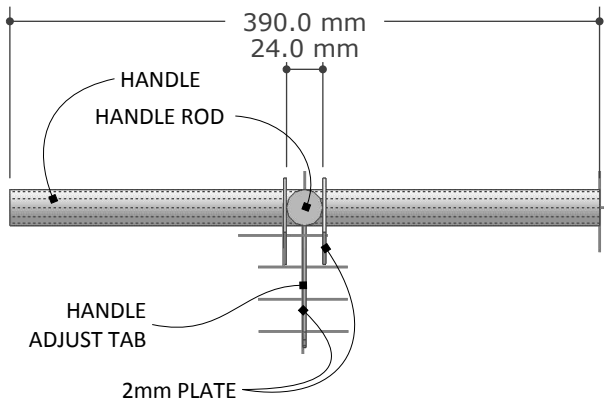




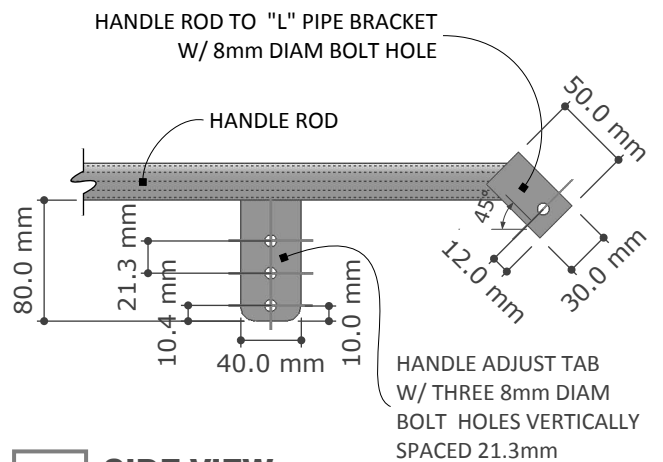
**3D1 PERSPECTIVE**  
SCALE: NTS



**E1 SIDE VIEW**  
SCALE: 1:10

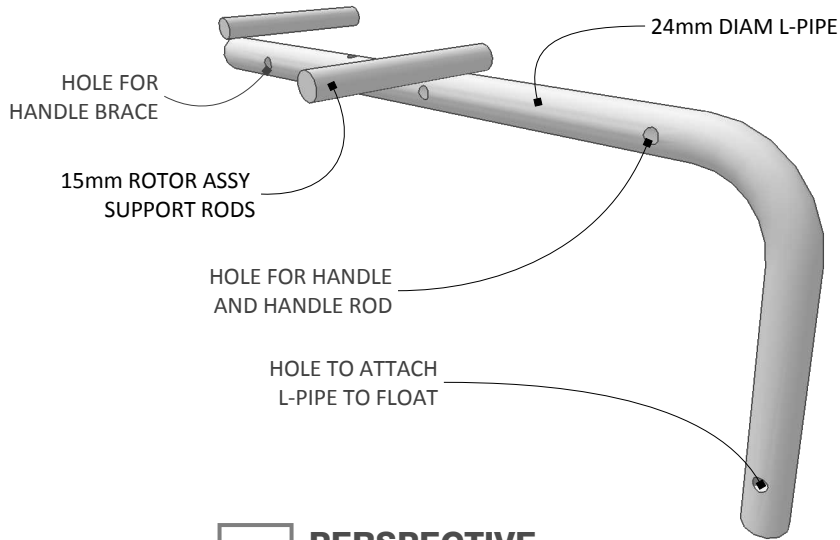


**E4 FRONT VIEW**  
SCALE: 1:5

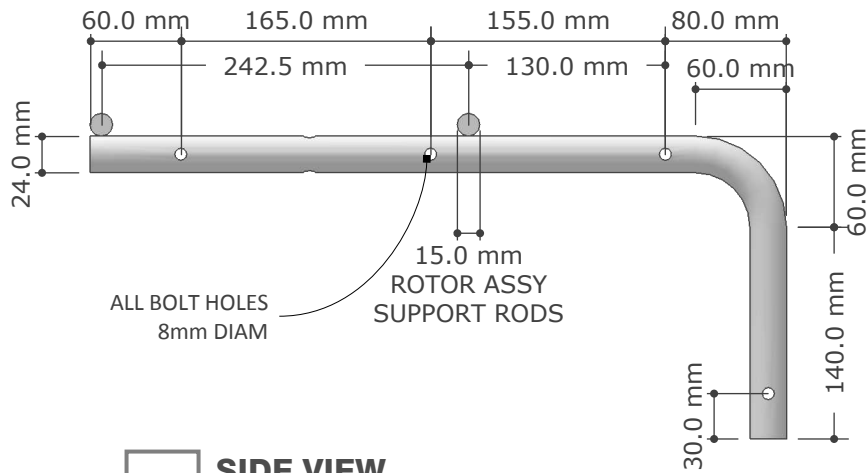


**E3 SIDE VIEW**  
SCALE: 1:5

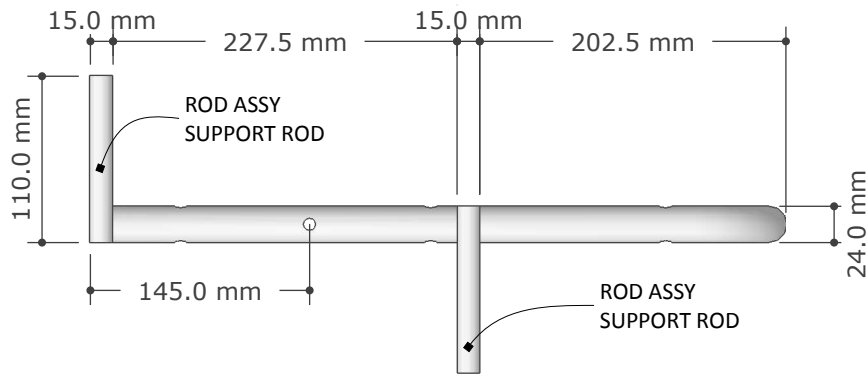




**3D2** PERSPECTIVE  
SCALE: NTS

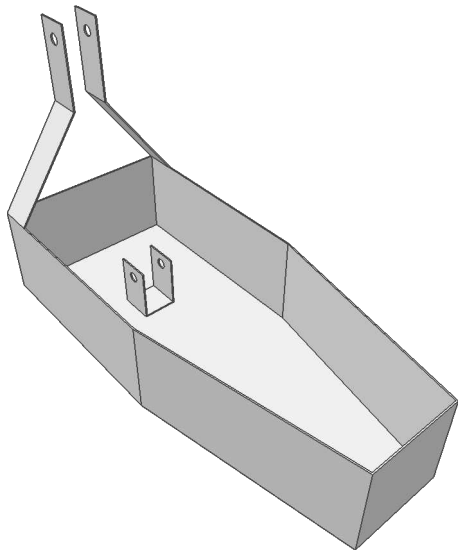


**E5** SIDE VIEW  
SCALE: 1:5

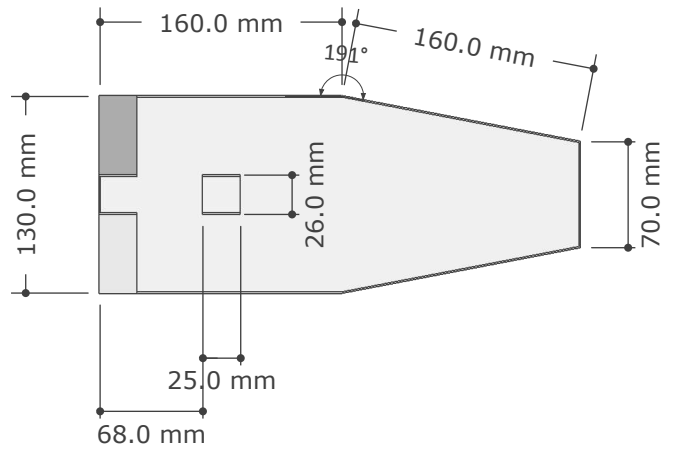


**P1** TOP VIEW  
SCALE: 1:5

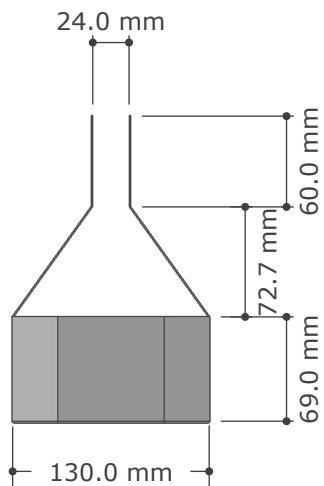




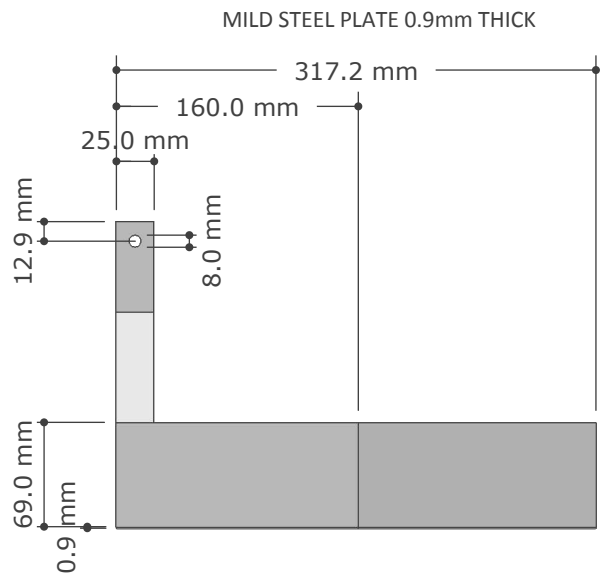
**3D3** PERSPECTIVE  
SCALE: NTS



**P2** PLAN VIEW  
SCALE: 1:5

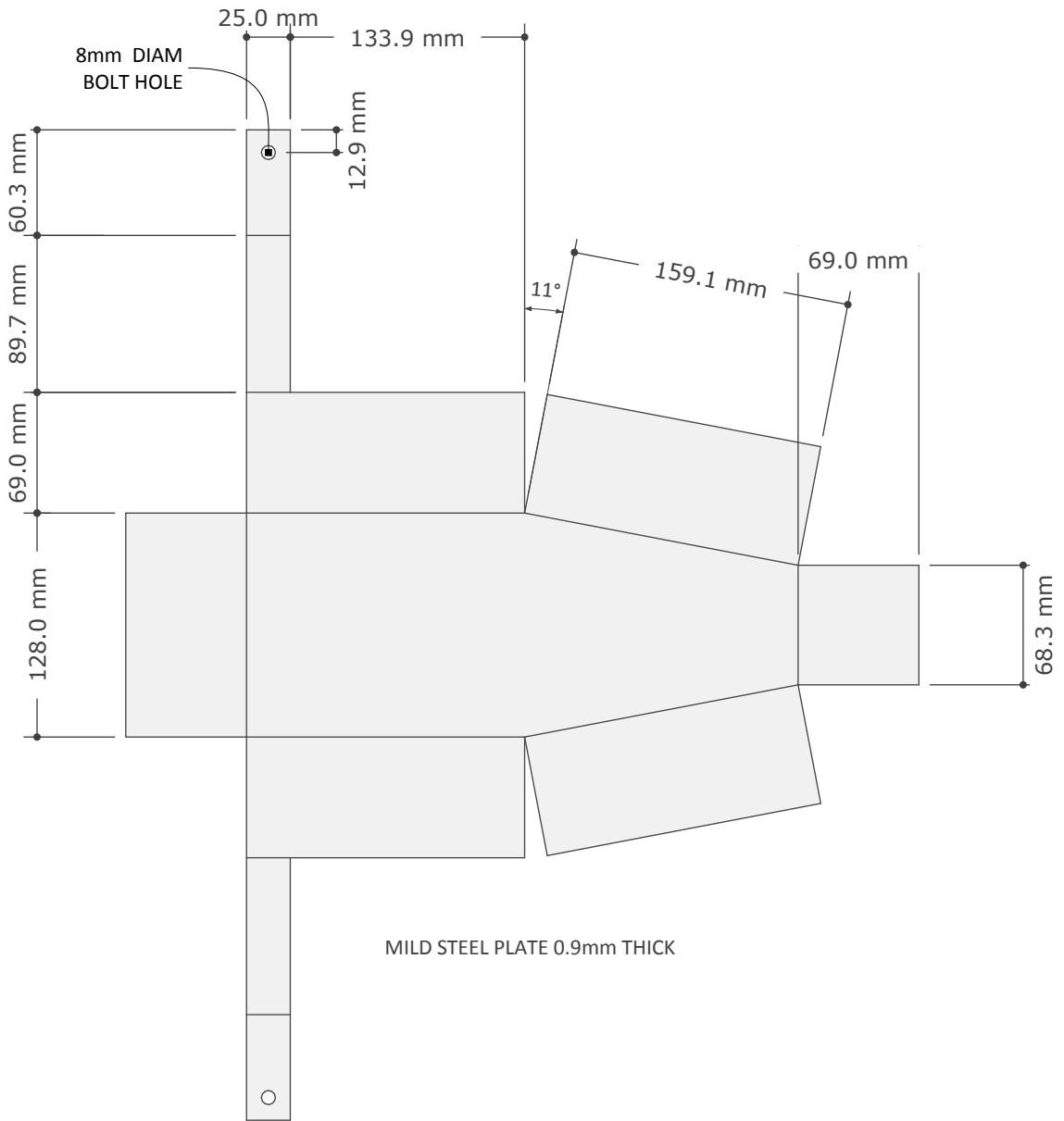


**E6** FRONT VIEW  
SCALE: 1:5



**E7** SIDE VIEW  
SCALE: 1:5

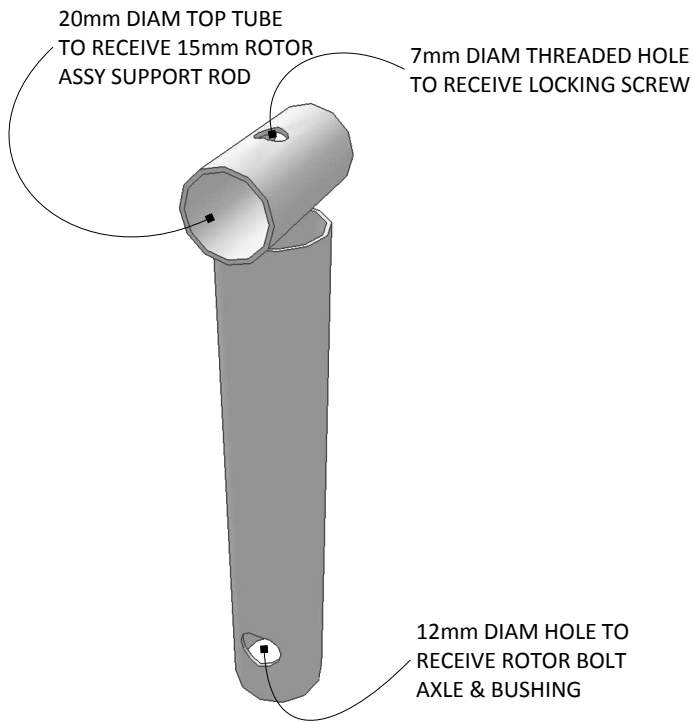




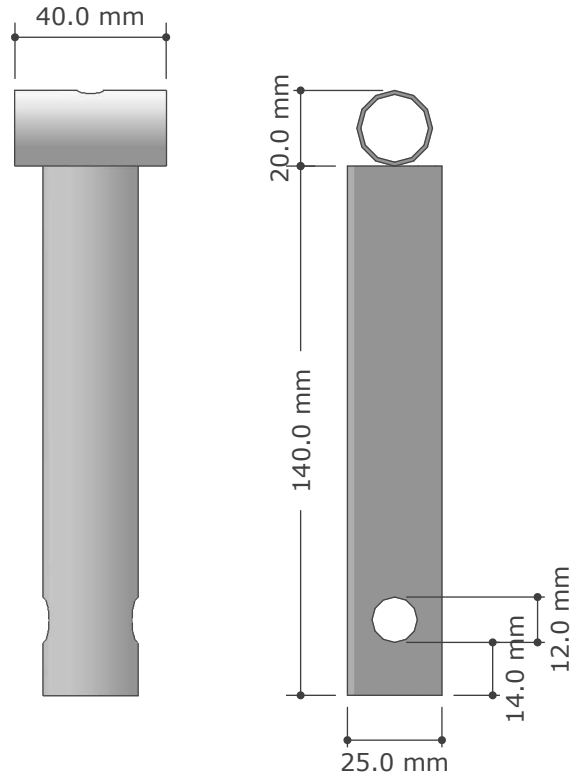
**P3**

**FLOAT UNFOLDED PLAN VIEW**  
**SCALE: 1:4**

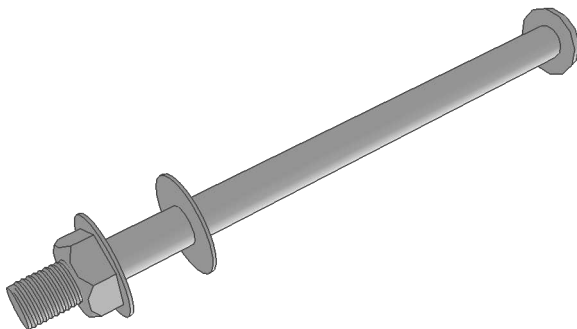




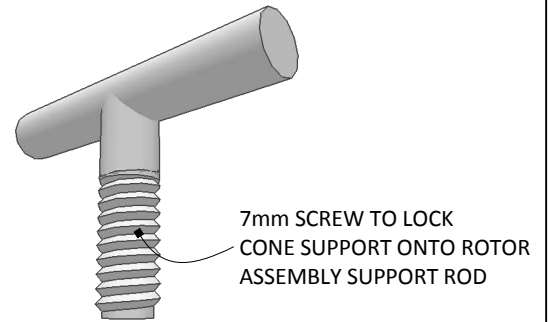
**3D4** CONE SUPPORT PERSPECTIVE  
SCALE: NTS



**E8** CONE SUPPORT FRONT & SIDE  
SCALE: 1:2



**3D5** BOLT AXLE PERSPECTIVE  
SCALE: NTS

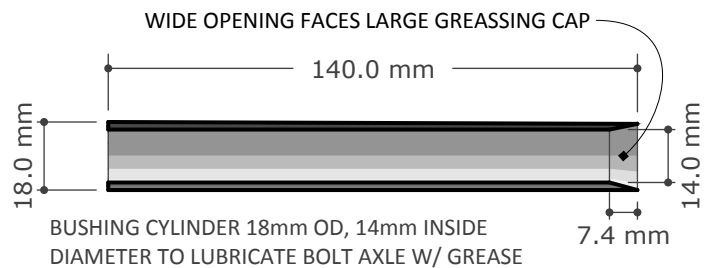


**3D6** T-HANDLE LOCKING SCREW  
SCALE: NTS

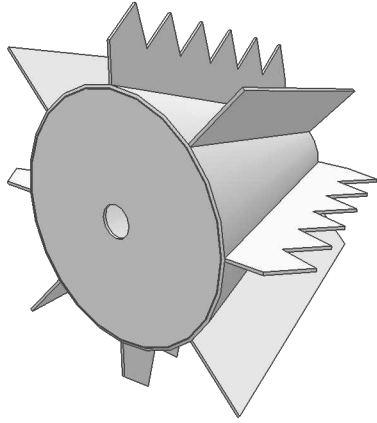
12mm DIAM BOLT W/ROUND HEAD, NUT AND  
WASHERS TO FIT.



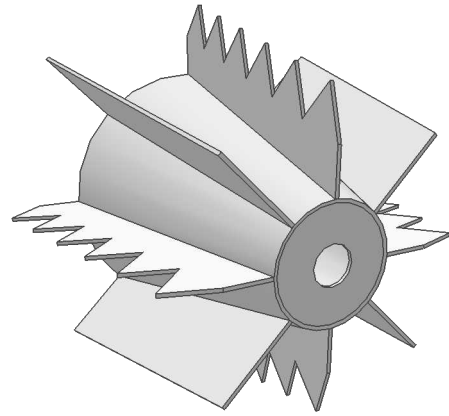
**E9** BOLT AXLE ELEVATION  
SCALE: 1:4



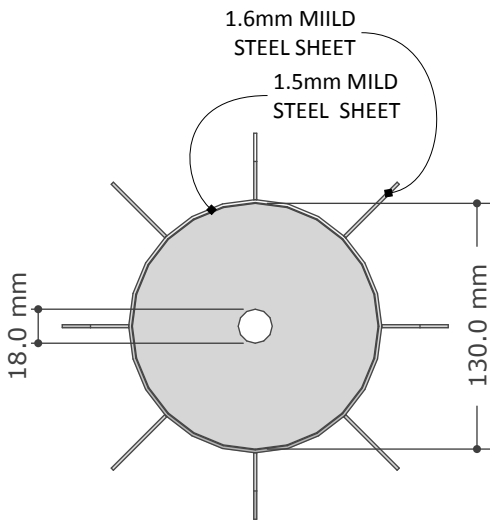
**S1** GREASE BUSHING SECTION  
SCALE: 1:2



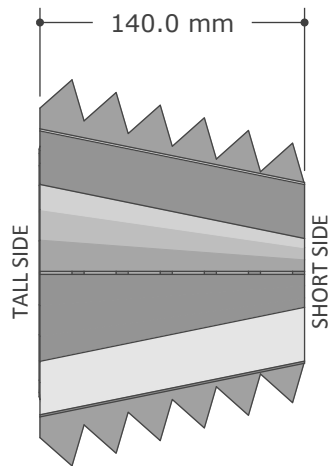
**3D8** CONE LARGE SIDE VIEW  
SCALE: NTS



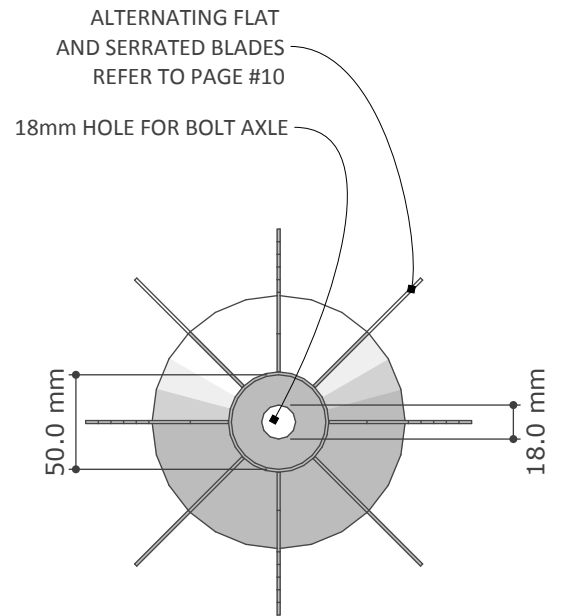
**3D9** CONE SHORT SIDE VIEW  
SCALE: NTS



**E10** CONE TALL  
SCALE: 1:4

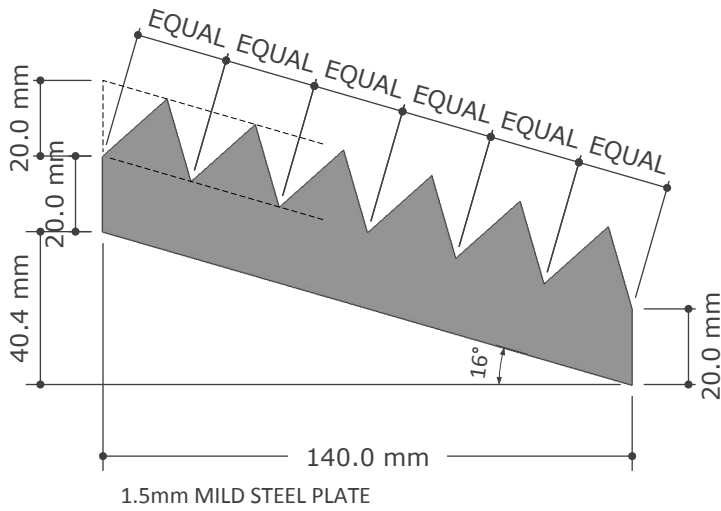


**E11** CONE SIDE  
SCALE: 1:4

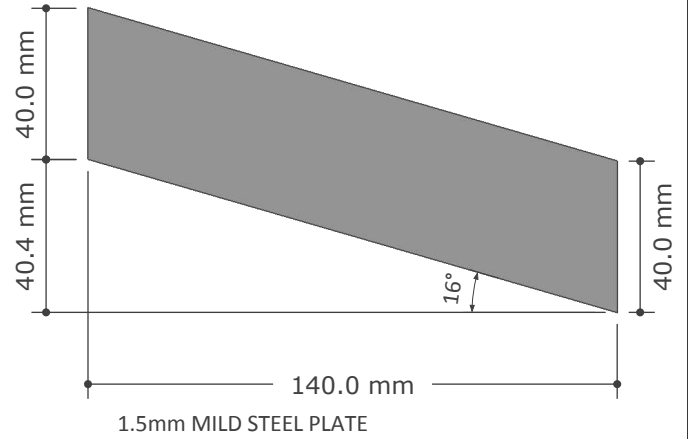


**E12** CONE SHORT  
SCALE: 1:4

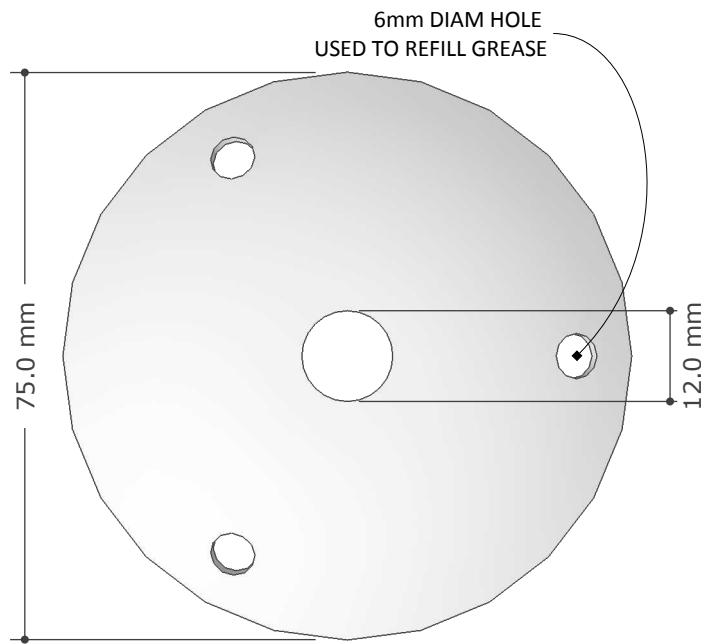




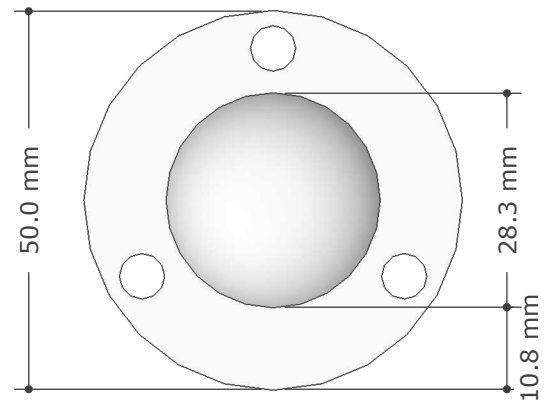
**E13** SERRATED BLADE  
SCALE: 1:2



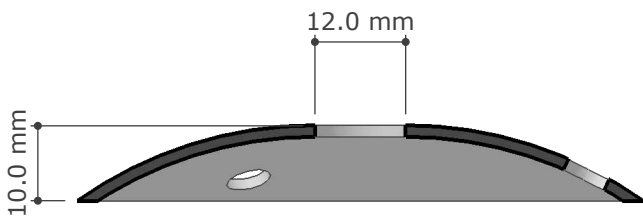
**E14** FLAT BLADE  
SCALE: 1:2



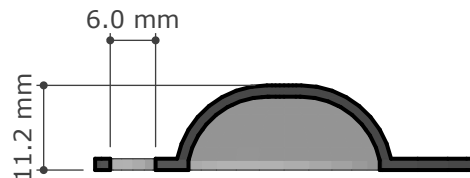
**P4** LARGE CAP TOP VIEW  
SCALE: 1:1



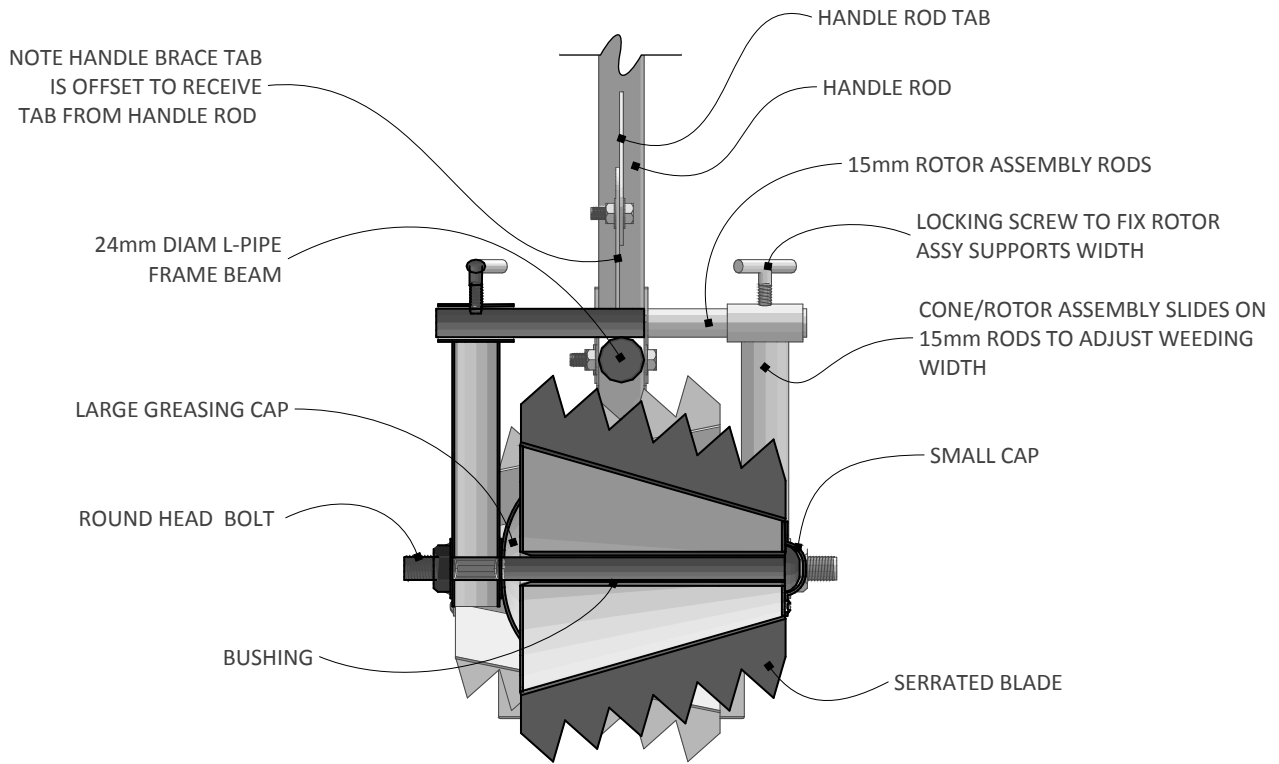
**P5** SMALL CAP TOP VIEW  
SCALE: 1:1



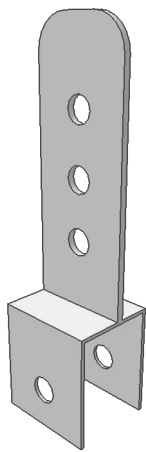
**S2** LARGE CAP SECTION  
SCALE: 1:1



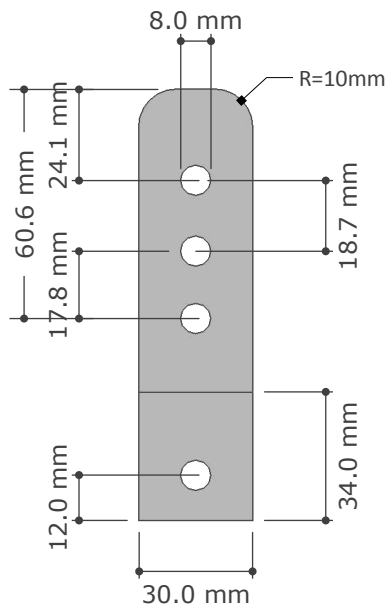
**S3** SMALL CAP SECTION  
SCALE: 1:1



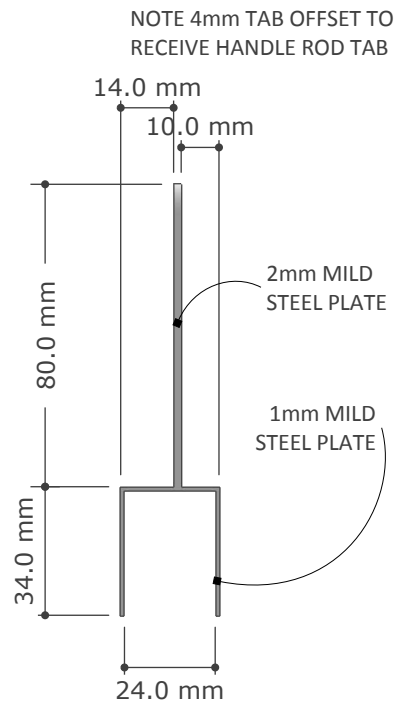
**S4** ROTOR ASSEMBLY SECTION  
SCALE: 1:4



**3D10** HANDLE BRACE  
SCALE: NTS

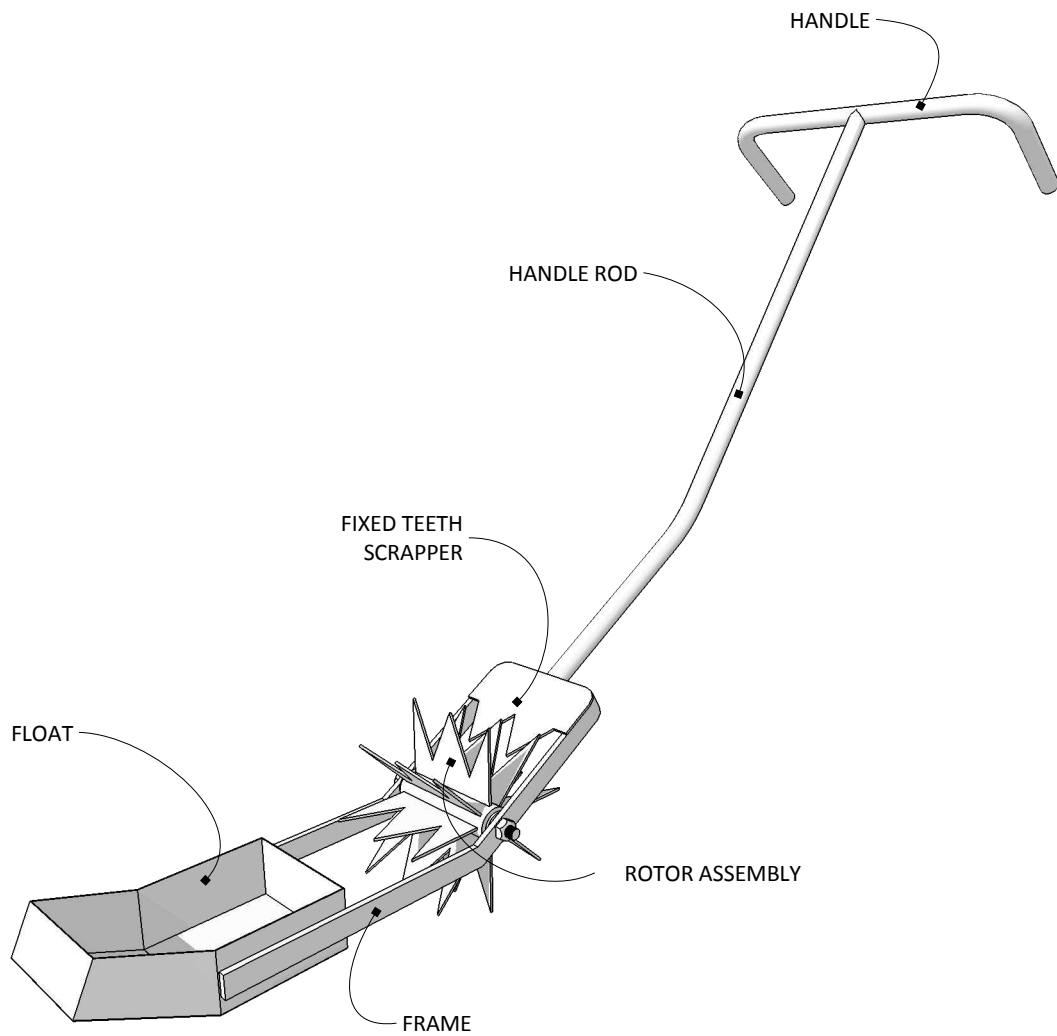


**E15** H-BRACE SIDE  
SCALE: 1:2



**E16** H-BRACE FRONT  
SCALE: 1:2





519 Seabright Ave., Suite 216 • Santa Cruz, CA 95062  
www.earthlinksinc.org • elinks@cruzio.com • 831-457-0414

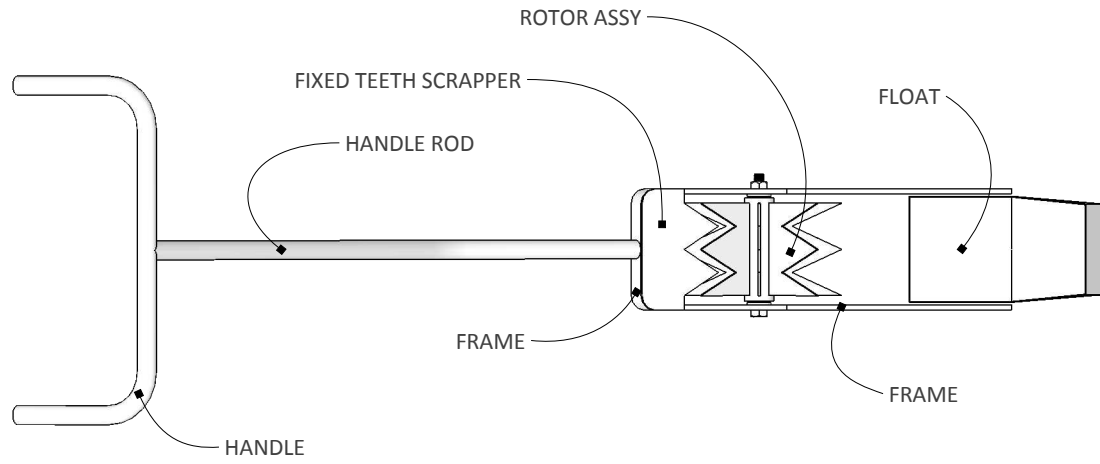
PROJECT: **MANDAVA WEEDER**

Developed by Kishan Rao, Andhra Pradesh,  
India in his village of Mandava

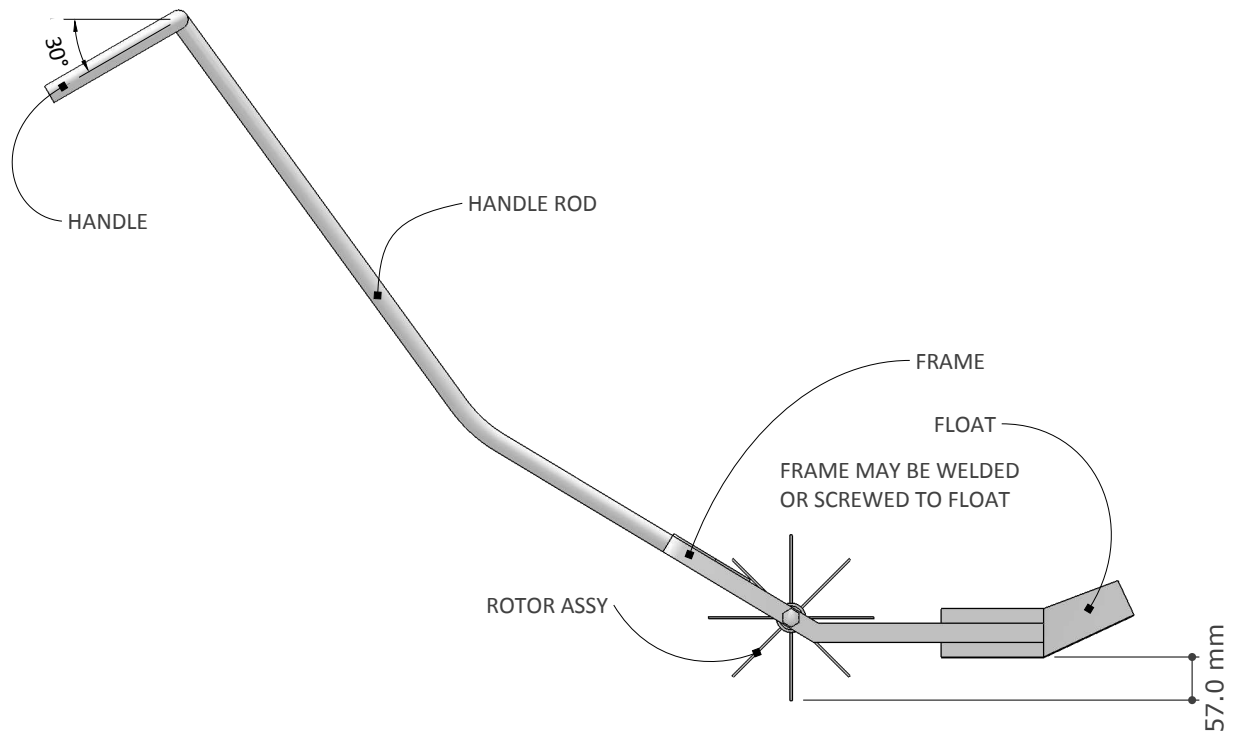
ISSUE: **April 01, 2020**

SHEET: **PERSPECTIVE**

PAGE: **01 OF 10**

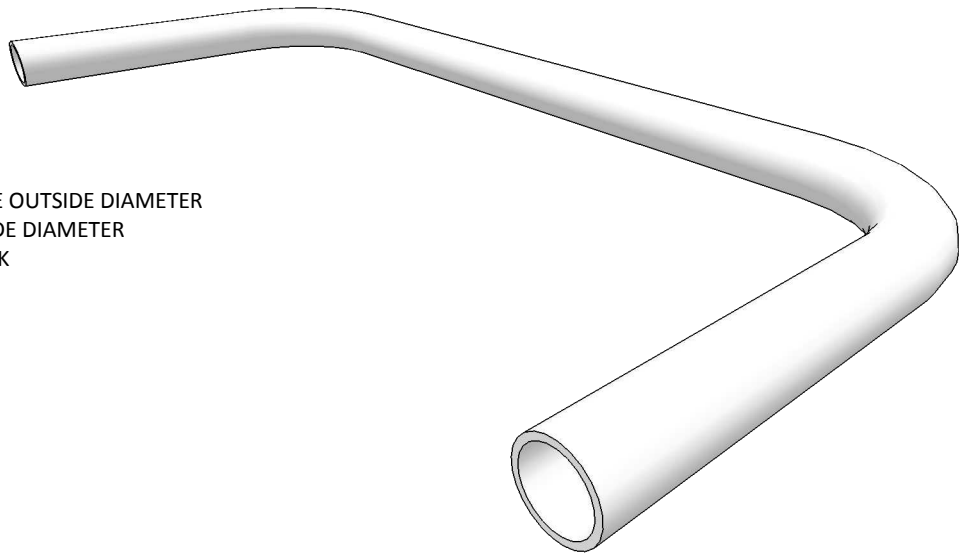


**P1** TOP VIEW  
SCALE: 1:10



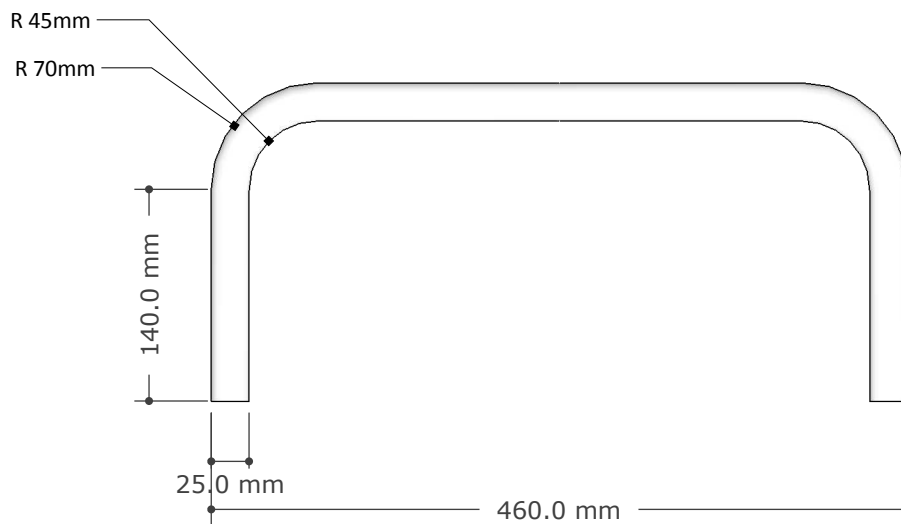
**E1** SIDE VIEW  
SCALE: 1:10





25mm TUBE OUTSIDE DIAMETER  
21mm INSIDE DIAMETER  
02mm THICK

**3D1** PERSPECTIVE  
SCALE: NTS



**P2** TOP VIEW  
SCALE: 1:5



519 Seabright Ave., Suite 216 • Santa Cruz, CA 95062  
www.earthlinksinc.org • elinks@cruzio.com • 831-457-0414

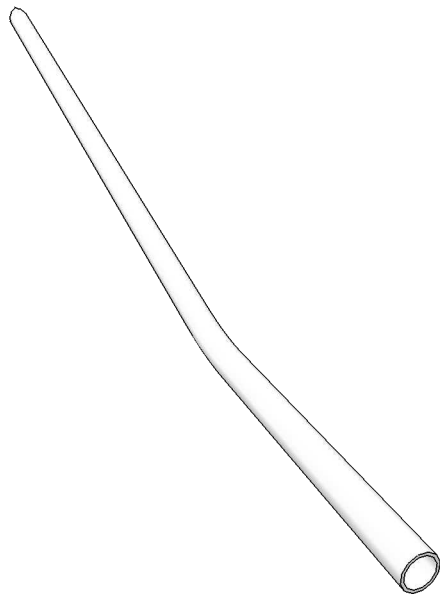
PROJECT:

MANDAVA WEEDER

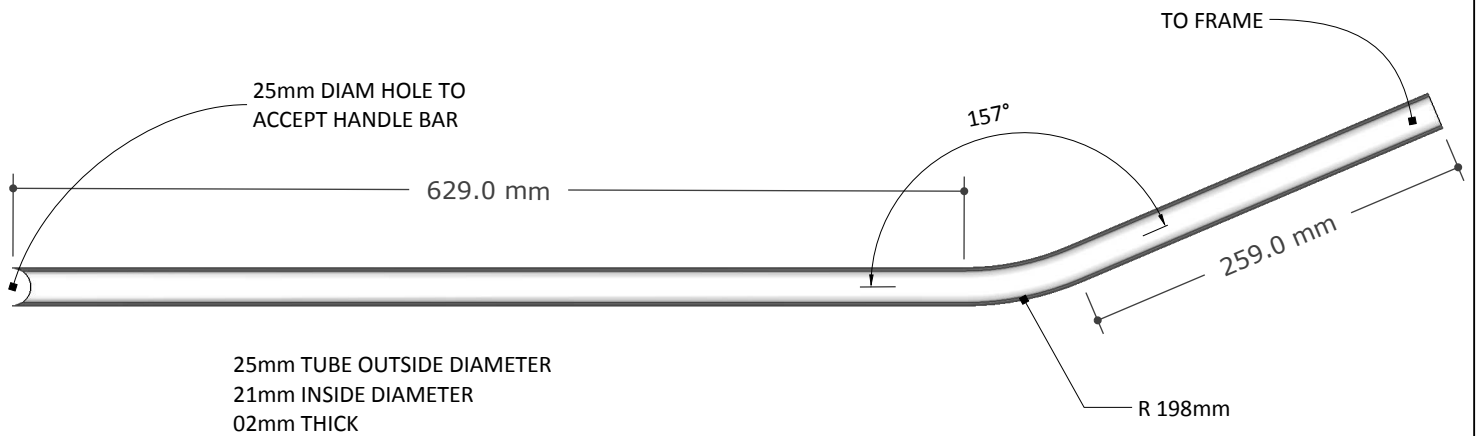
ISSUE: April 01, 2020

SHEET: HANDLE

PAGE: 03 OF 10

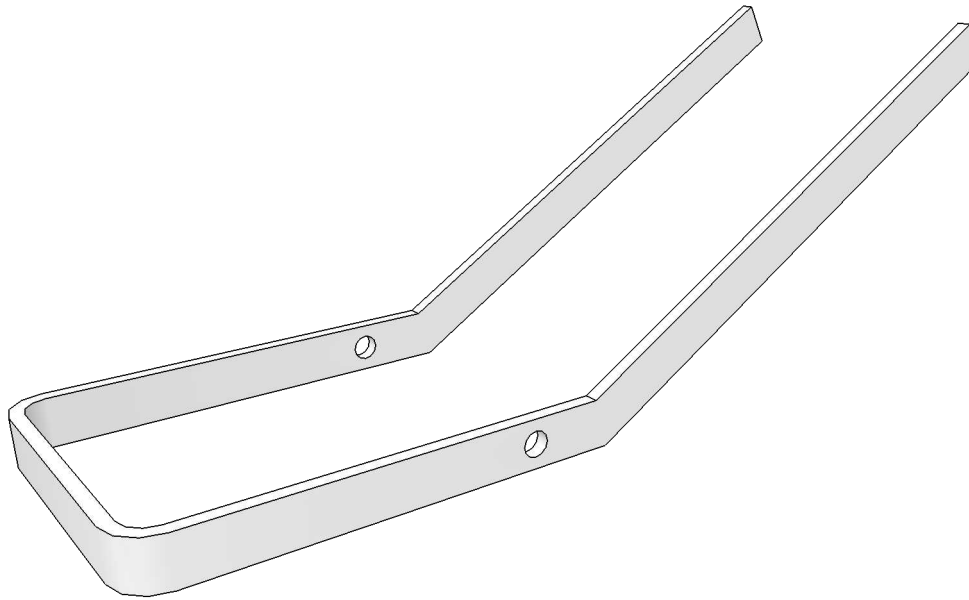


**3D2** PERSPECTIVE  
SCALE: NTS



**S1** SECTION  
SCALE: 1:5

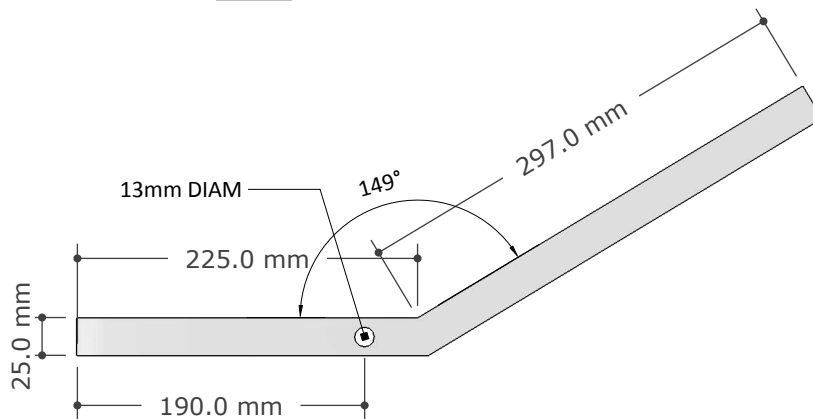




**3D3** PERSPECTIVE  
SCALE: NTS

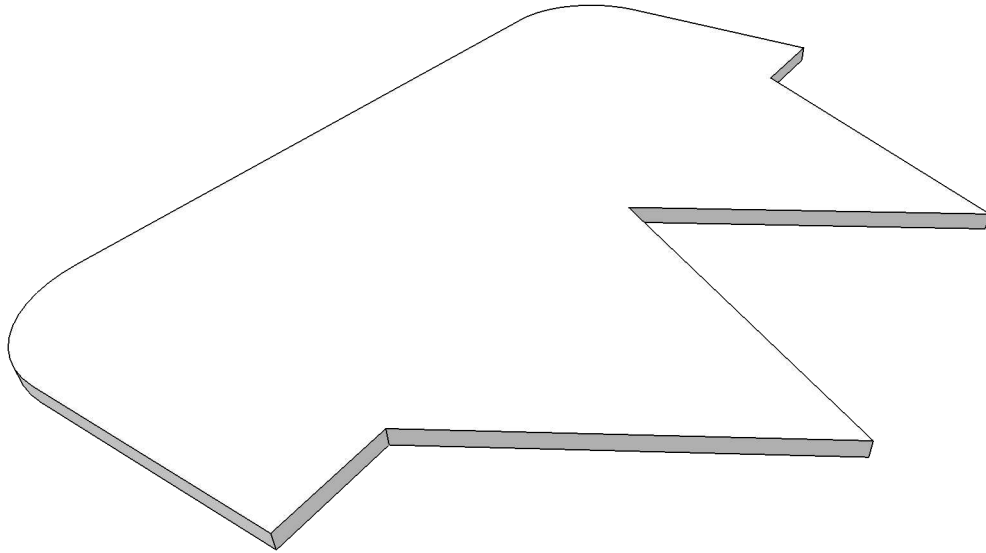


**P3** TOP VIEW  
SCALE: 1:5

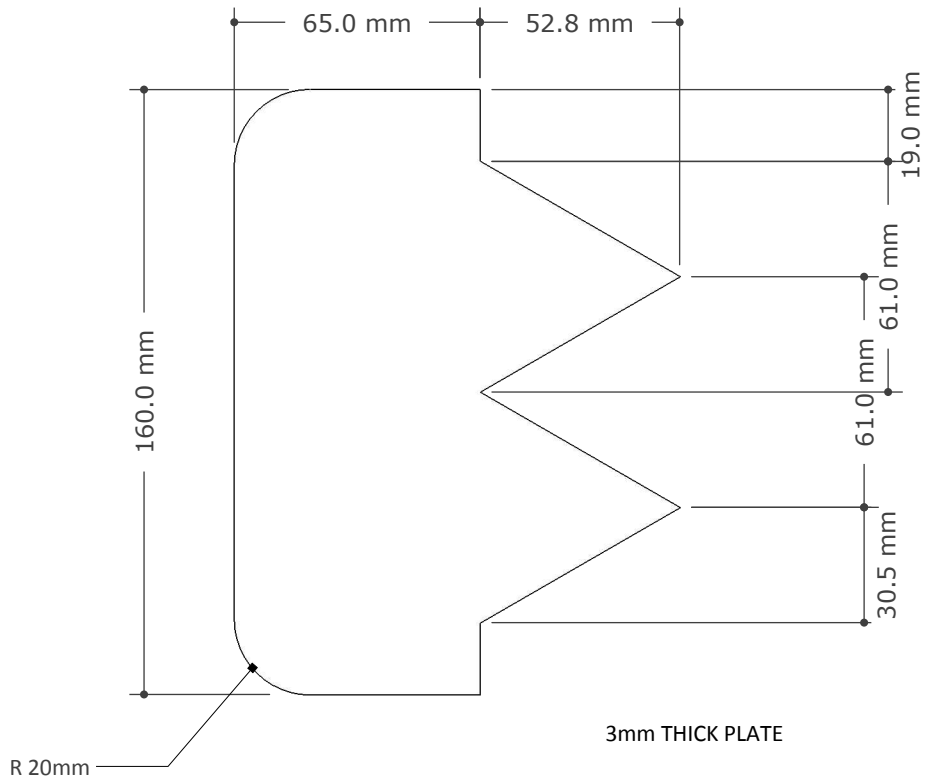


**E2** SIDE VIEW  
SCALE: 1:5



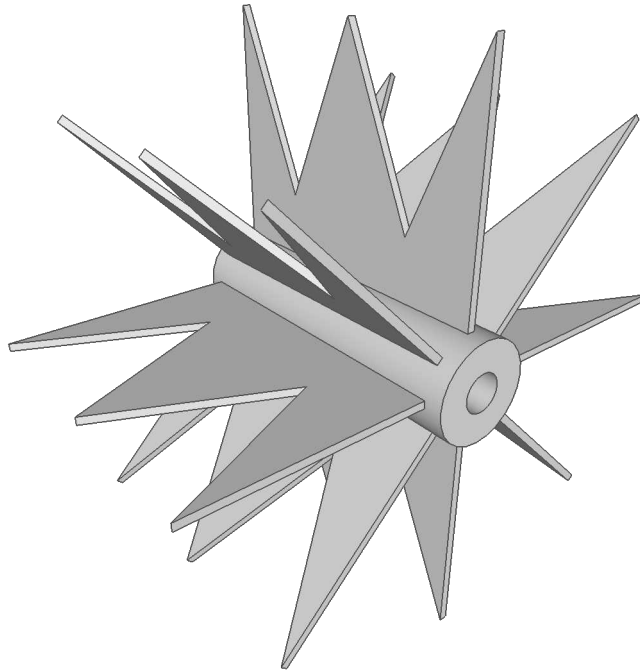


**3D4** PERSPECTIVE  
SCALE: NTS

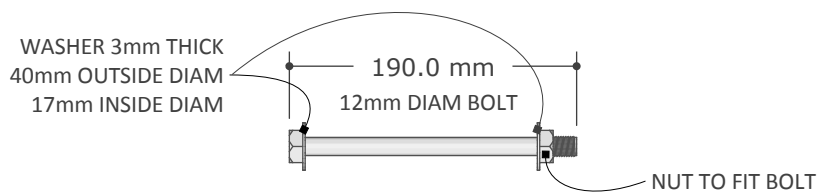


**P4** TOP VIEW  
SCALE: 1:2

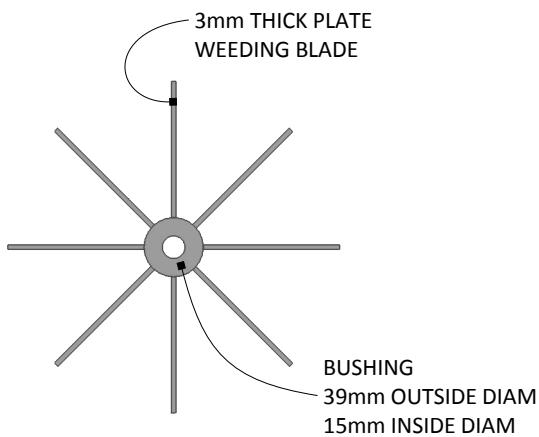




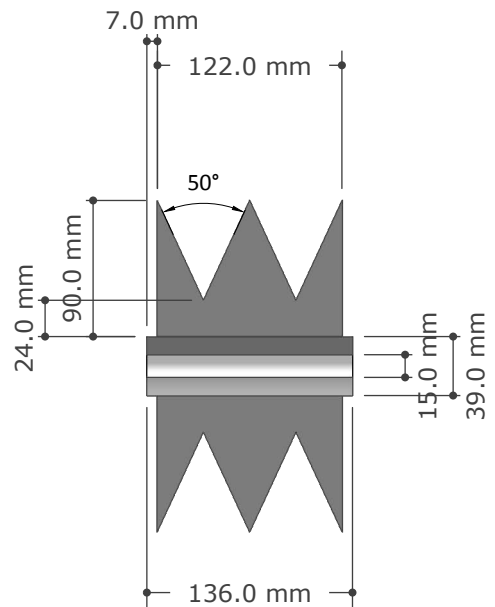
**3D4** PERSPECTIVE  
SCALE: NTS



**E4** BOLT SIDE VIEW  
SCALE: 1:5

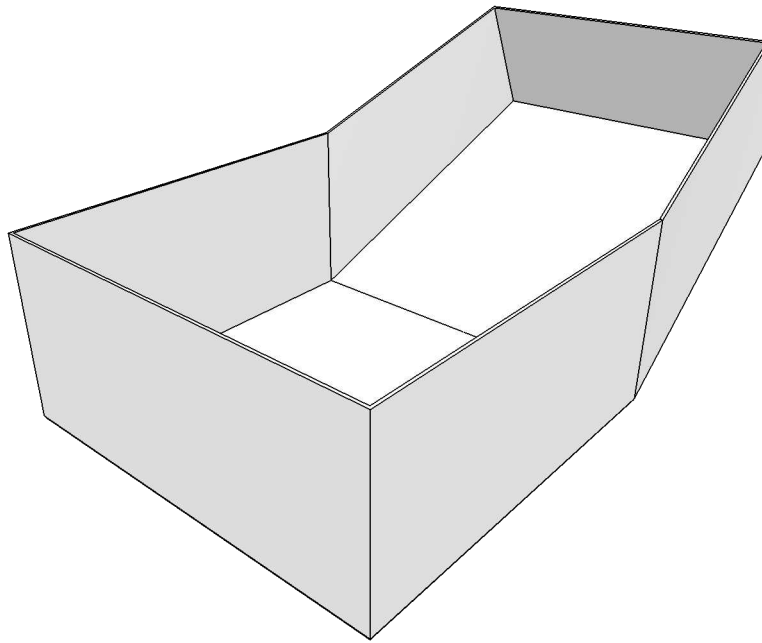


**E4** SIDE VIEW  
SCALE: 1:5

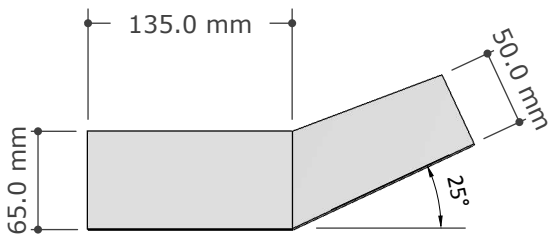


**S2** SECTION  
SCALE: 1:5



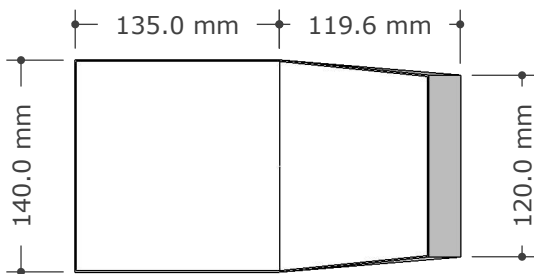


**3D5** PERSPECTIVE  
SCALE: NTS

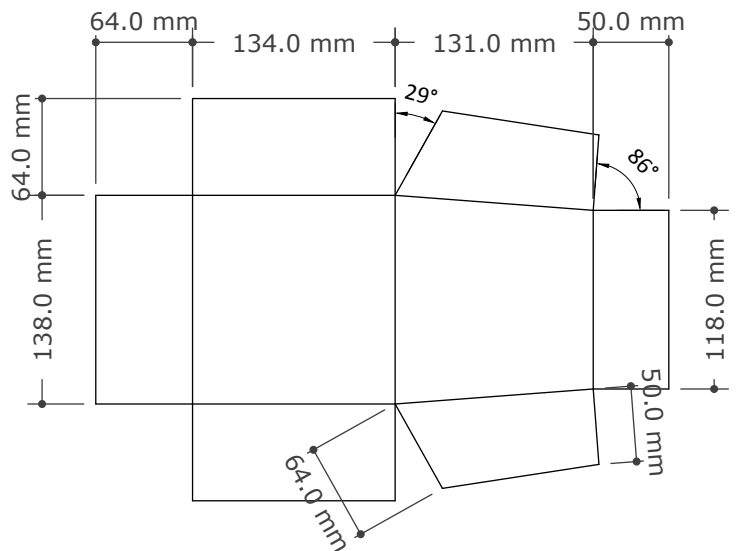


**E4** SIDE VIEW  
SCALE: 1:5

1mm THICK PLATE

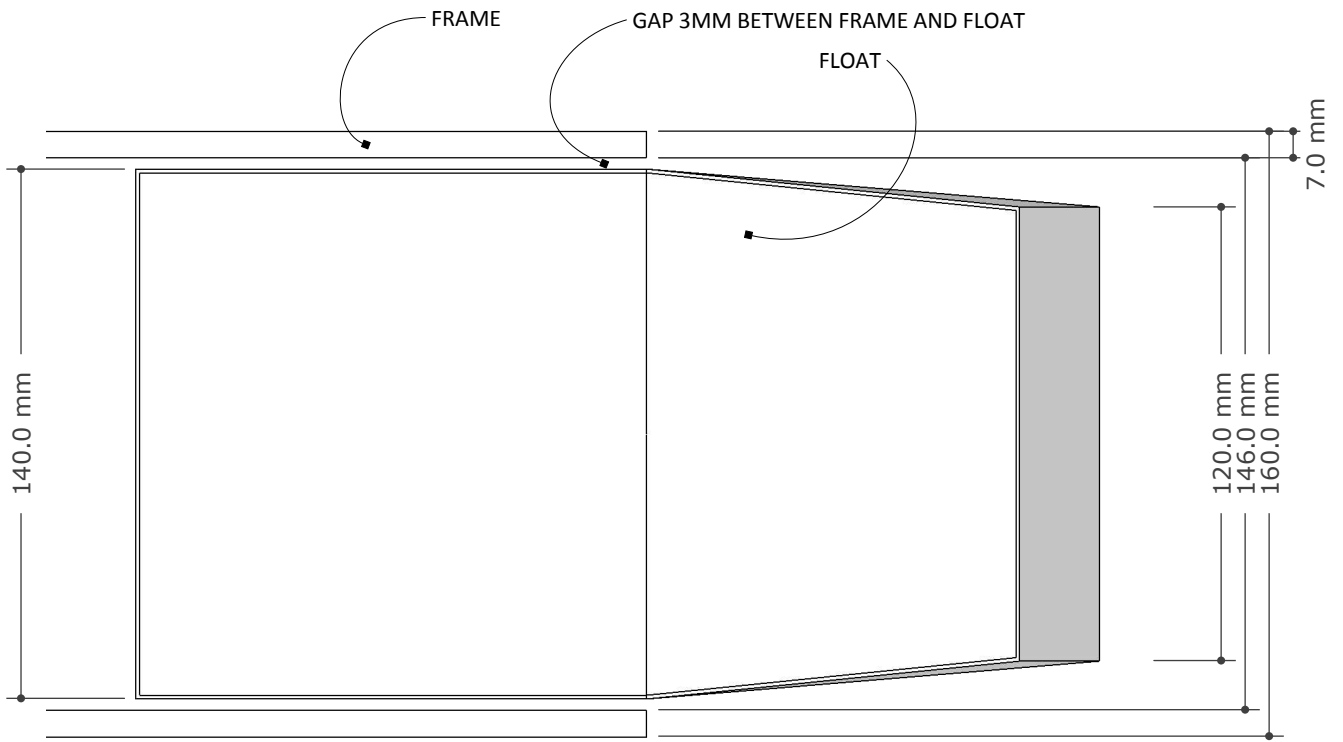


**P5** TOP VIEW  
SCALE: 1:5

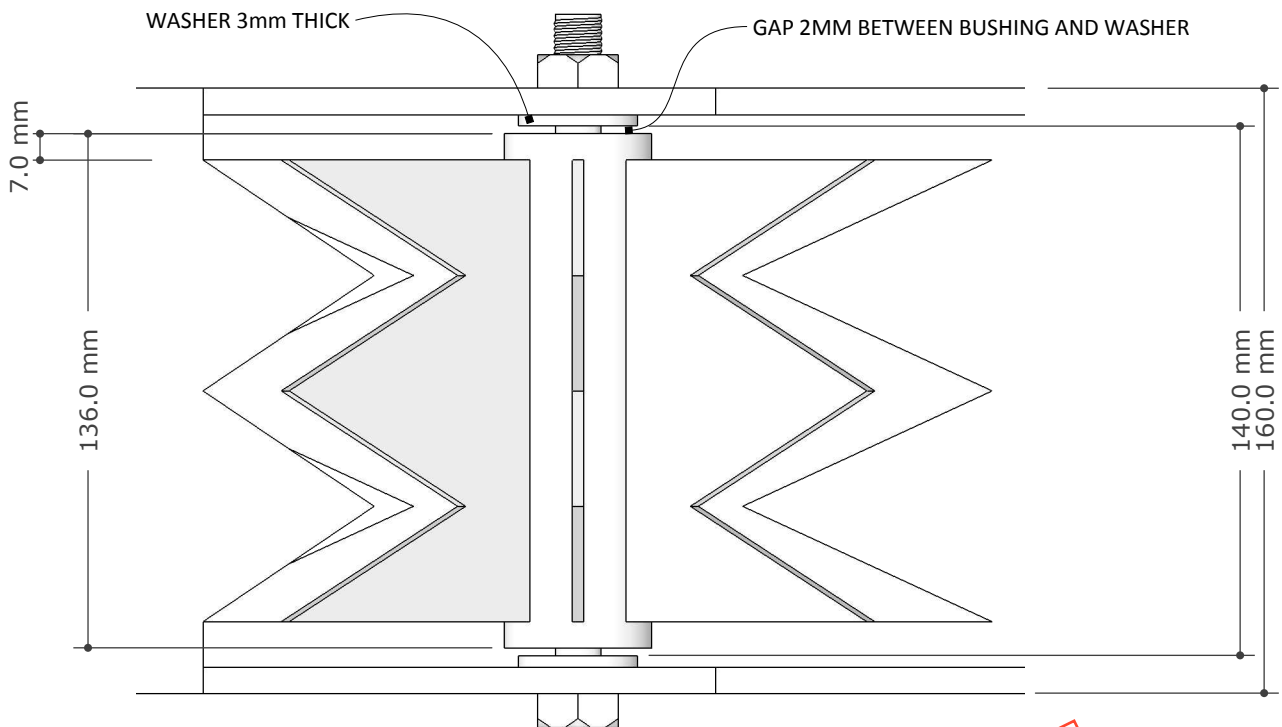


**P6** UNFOLDED PLAN  
SCALE: 1:5





**AC1** TOP VIEW FLOAT  
SCALE: 1:2

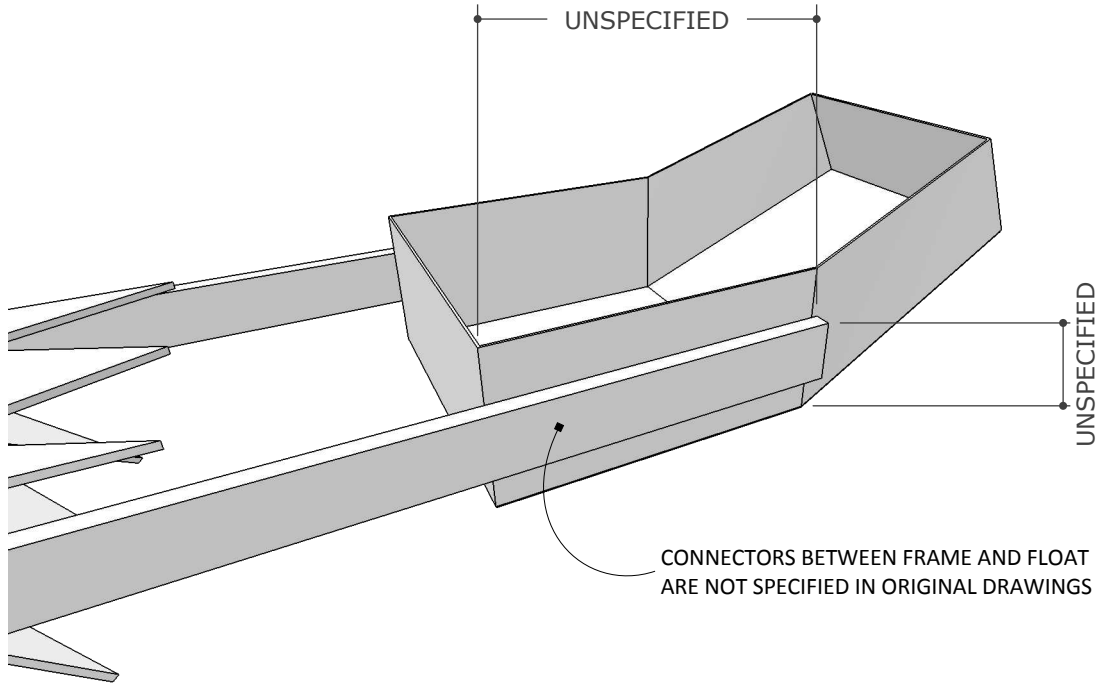


**AC2** TOP VIEW ROTOR  
SCALE: 1:2

INTERNAL USE ONLY  
PLEASE DO NOT  
RELEASE TO THE PUBLIC



ORIGINAL DRAWINGS DO NOT ESTABLISH RELATIVE, VERTICAL AND/OR HORIZONTAL DIMENSIONS BETWEEN FRAME AND FLOAT.  
VERTICAL DIMENSION AFFECTS DEPTH OF CUT BY WEEDING BLADES



**AC3** **FLOAT PERSPECTIVE**  
SCALE: 1:2

INTERNAL USE ONLY  
PLEASE DO NOT  
RELEASE TO THE PUBLIC



519 Seabright Ave., Suite 216 • Santa Cruz, CA 95062  
www.earthlinksinc.org • elinks@cruzio.com • 831-457-0414

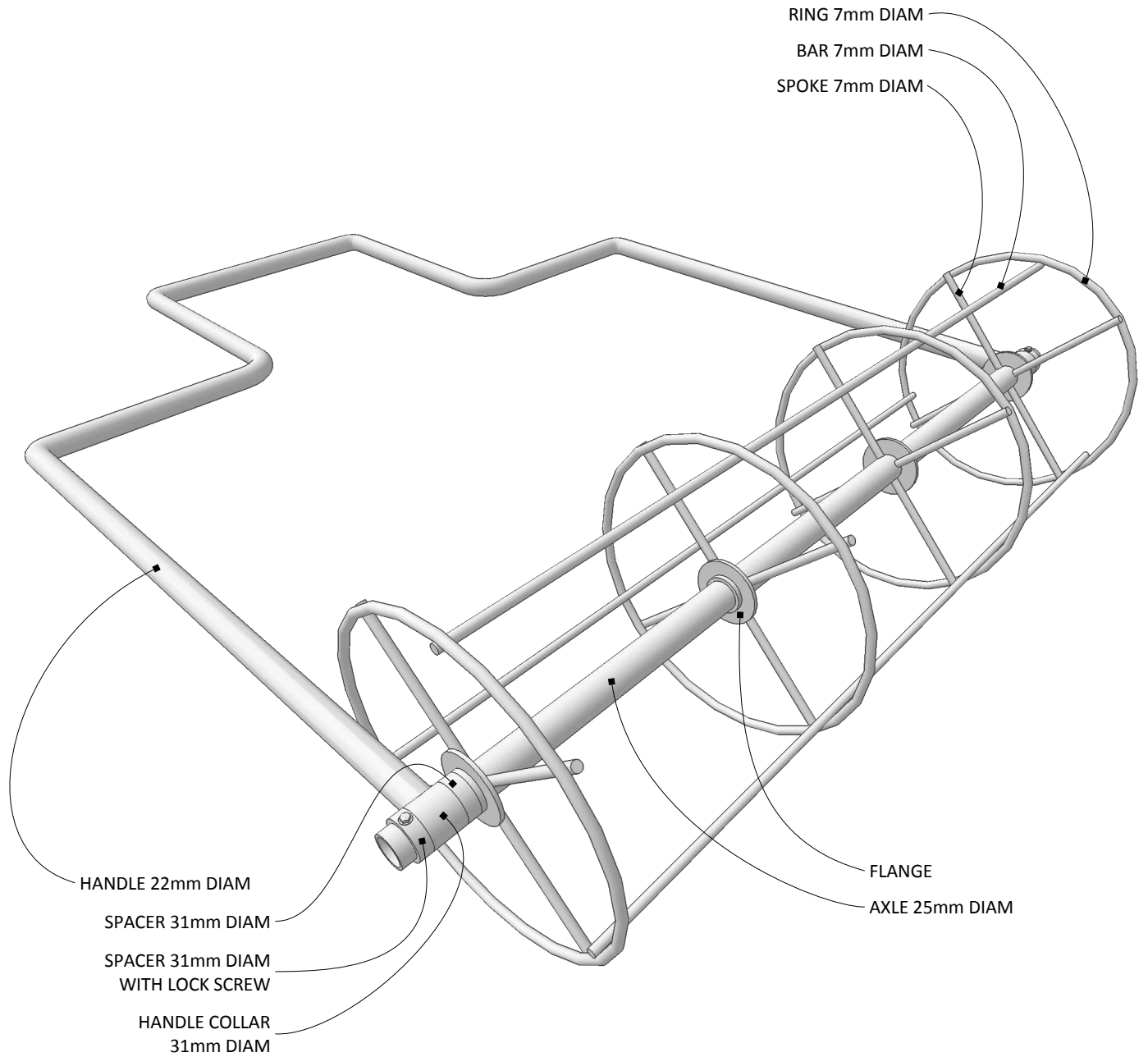
PROJECT:

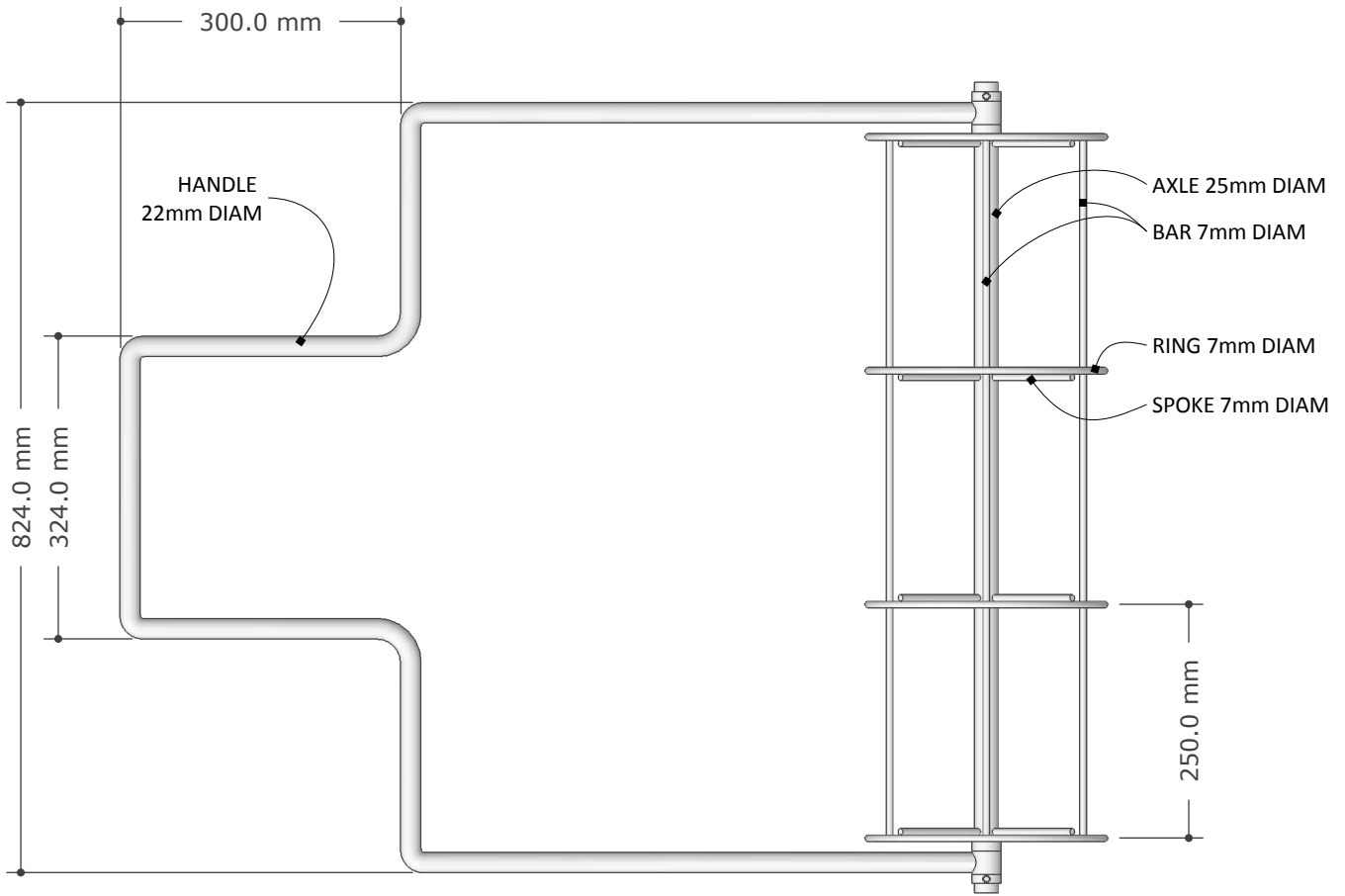
MANDAVA WEEDER

ISSUE: April 01, 2020

SHEET: AOC 03

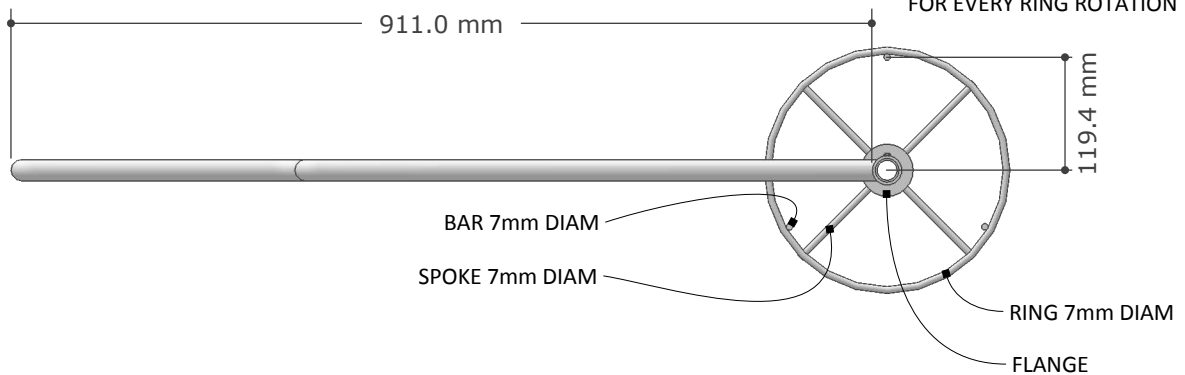
PAGE: 10 OF 10





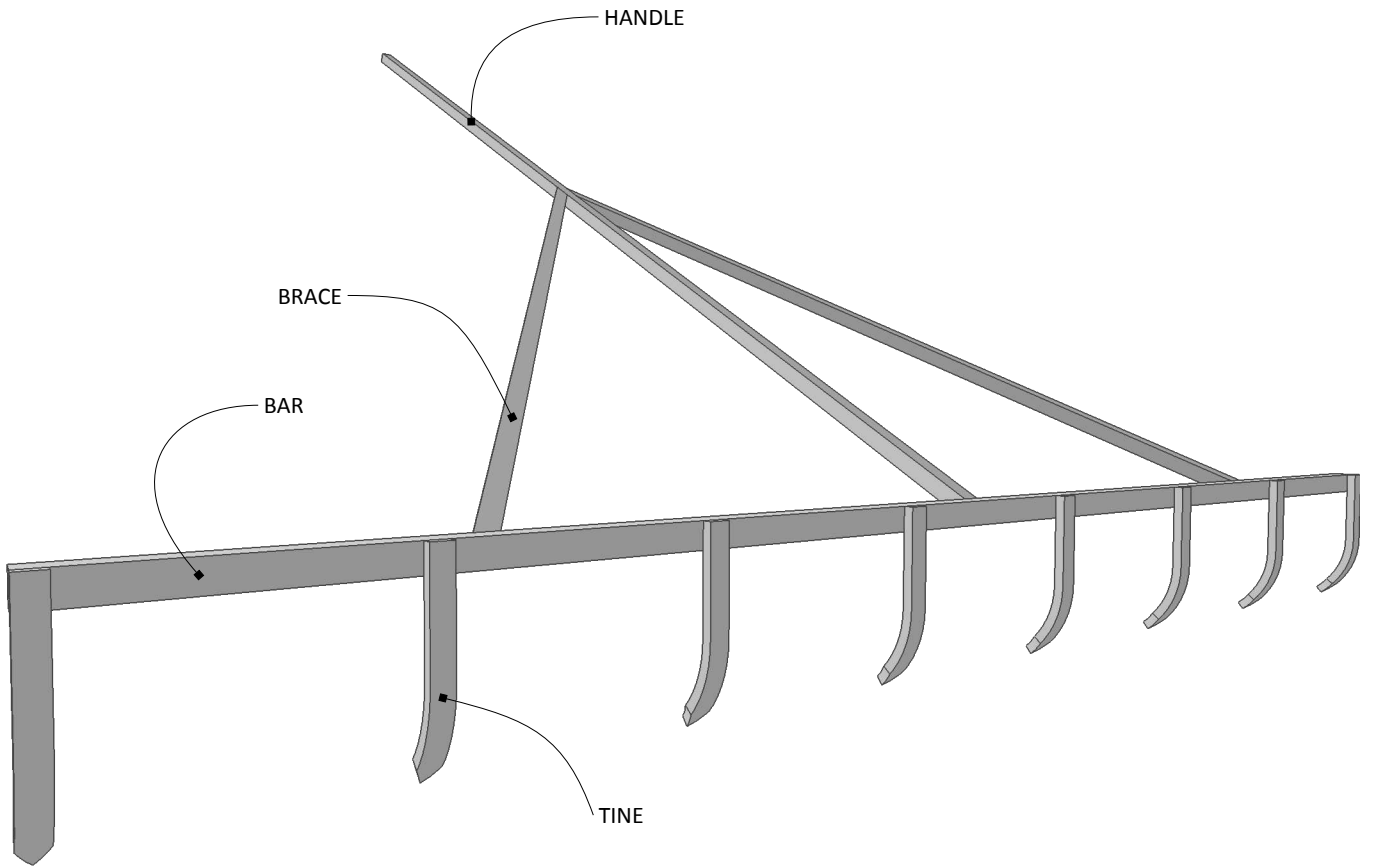
**P1** TOP VIEW  
SCALE: 1:8

**IMPORTANT:** CENTERLINE OF BARS PLACED 119.4mm FROM CENTER (RADIUS) TO PRODUCE 25cm GRID LINES ALONG THE PATH OF TRAVEL FOR EVERY RING ROTATION



**31** SIDE VIEW  
SCALE: 1:8





**3D1** PERSPECTIVE  
SCALE: NTS



519 Seabright Ave., Suite 216 • Santa Cruz, CA 95062  
www.earthlinksinc.org • elinks@cruzio.com • 831-457-0414

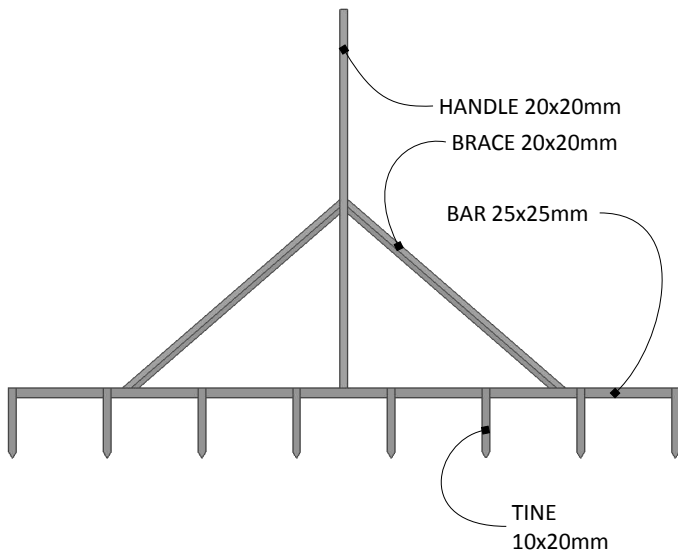
PROJECT:

SRI STEEL RAKE MARKER

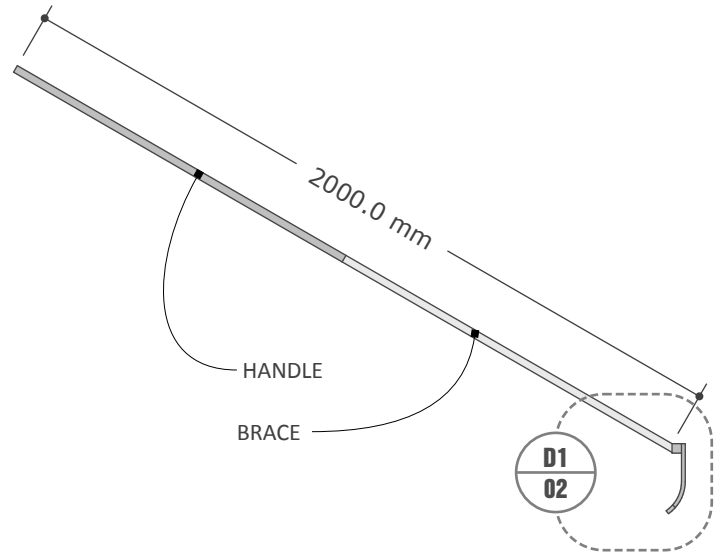
ISSUE: Jan 02, 2016

SHEET: PERSPECTIVE

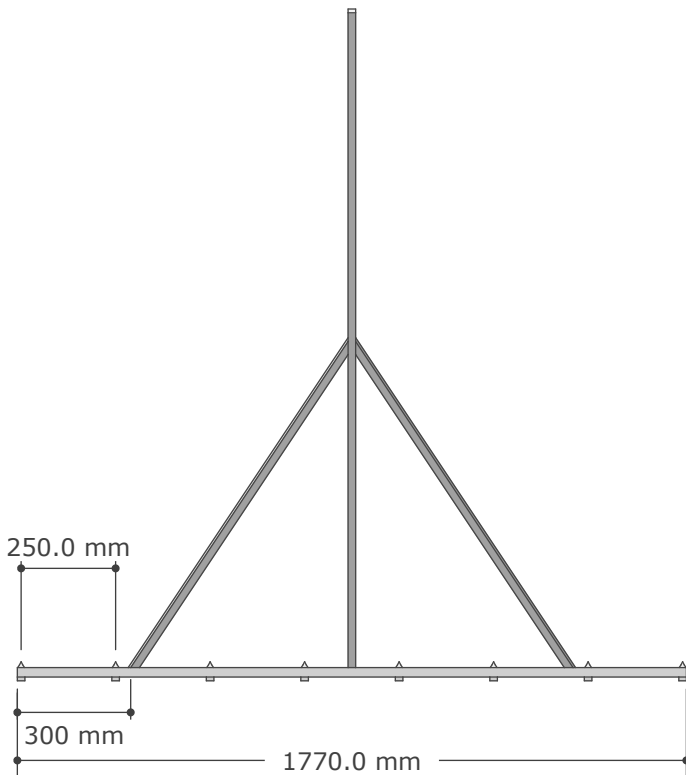
PAGE: 01 OF 04



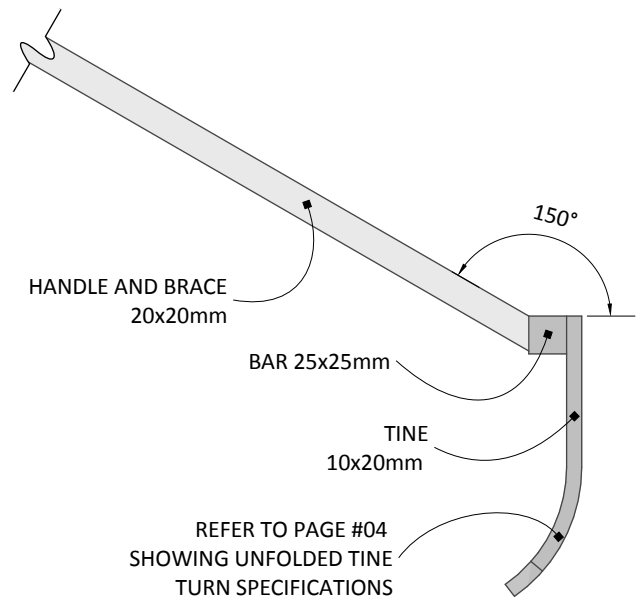
**E1 FRONT VIEW**  
SCALE: 1:20



**E2 SIDE VIEW**  
SCALE: 1:20

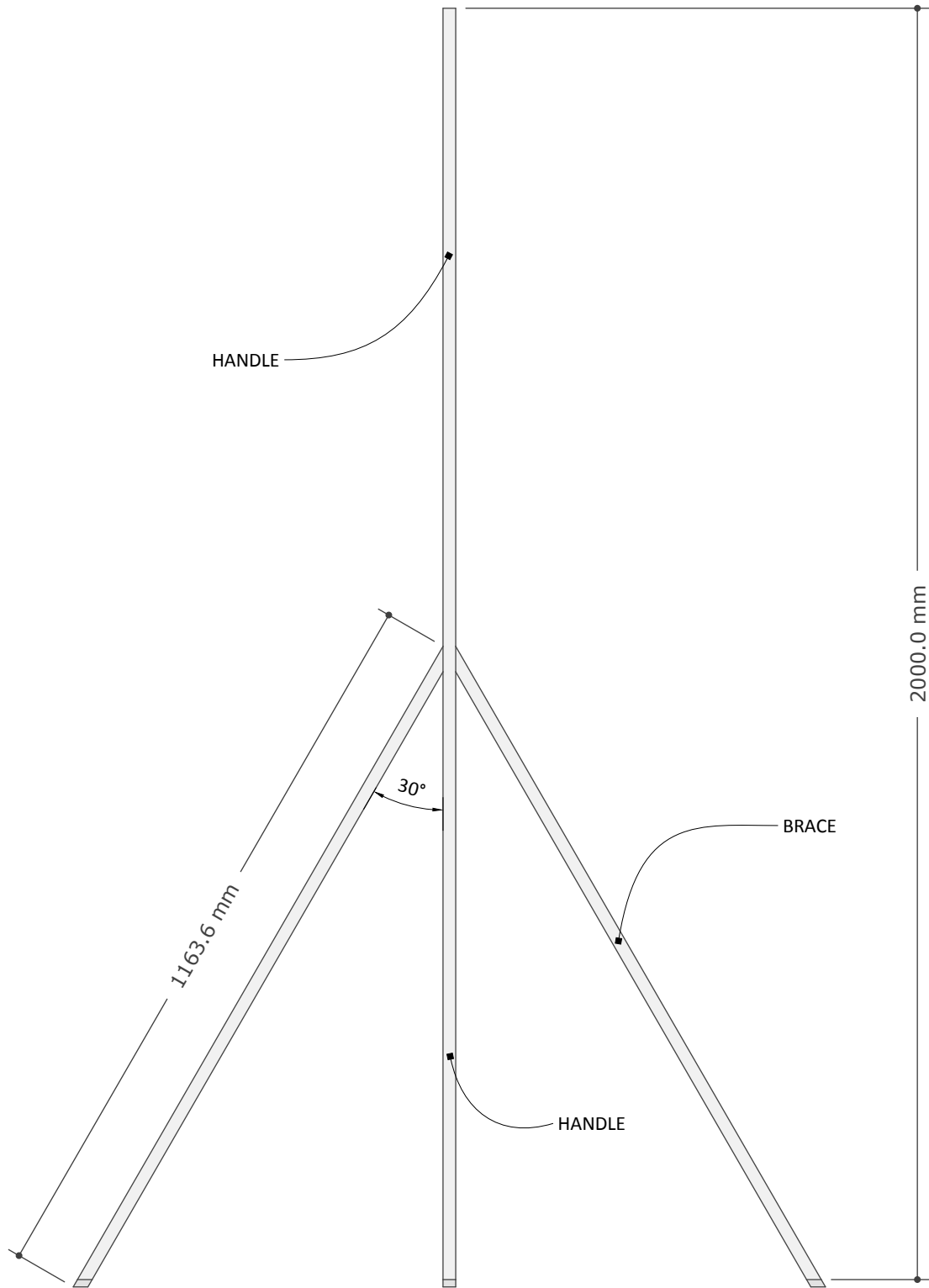


**P1 TOP VIEW**  
SCALE: 1:20



**D1 BAR & TINE DETAIL SIDE VIEW**  
SCALE: 1:5





**P2** **HANDLE ASSEMBLY TOP VIEW**  
**SCALE: 1:10**



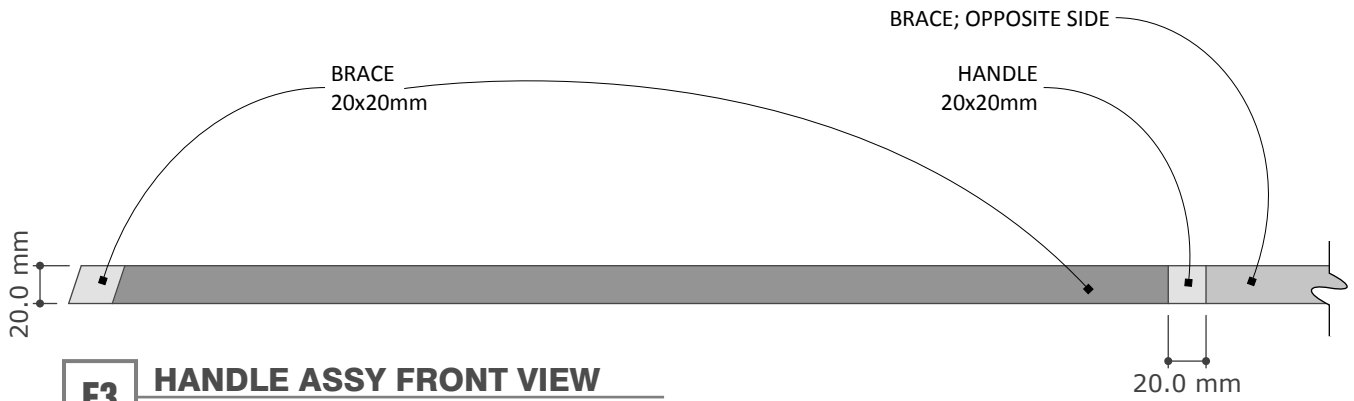
PROJECT:

SRI STEEL RAKE MARKER

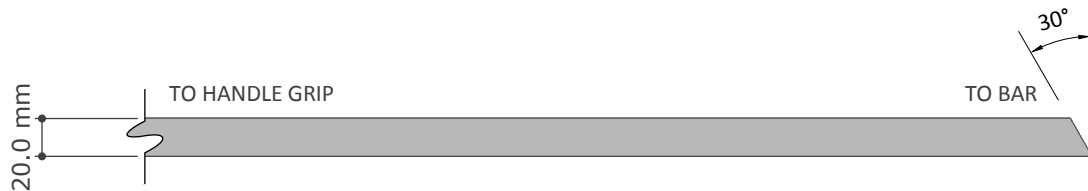
ISSUE: Jan 02, 2016

SHEET: HANDLE AND  
 BRACE ASSEMBLY  
 TOP VIEW

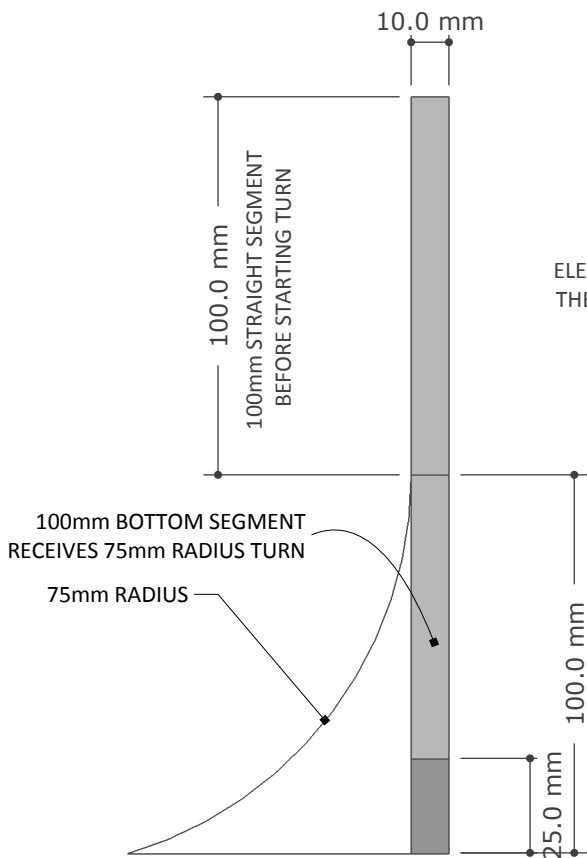
PAGE: 03 OF 04



**E3** HANDLE ASSY FRONT VIEW  
SCALE: 1:3

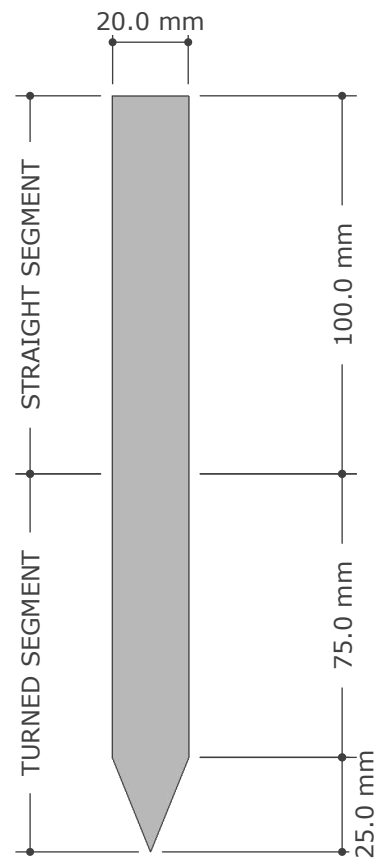


**E4** HANDLE SIDE VIEW  
SCALE: 1:3



**E5** UNFOLDED TINE SIDE VIEW  
SCALE: 1:2

ELEVATIONS "E5" AND "E6" SHOW THE TINE BEFORE BEING TURNED.



**E6** UNFOLDED TINE FRONT VIEW  
SCALE: 1:2